

Preventive

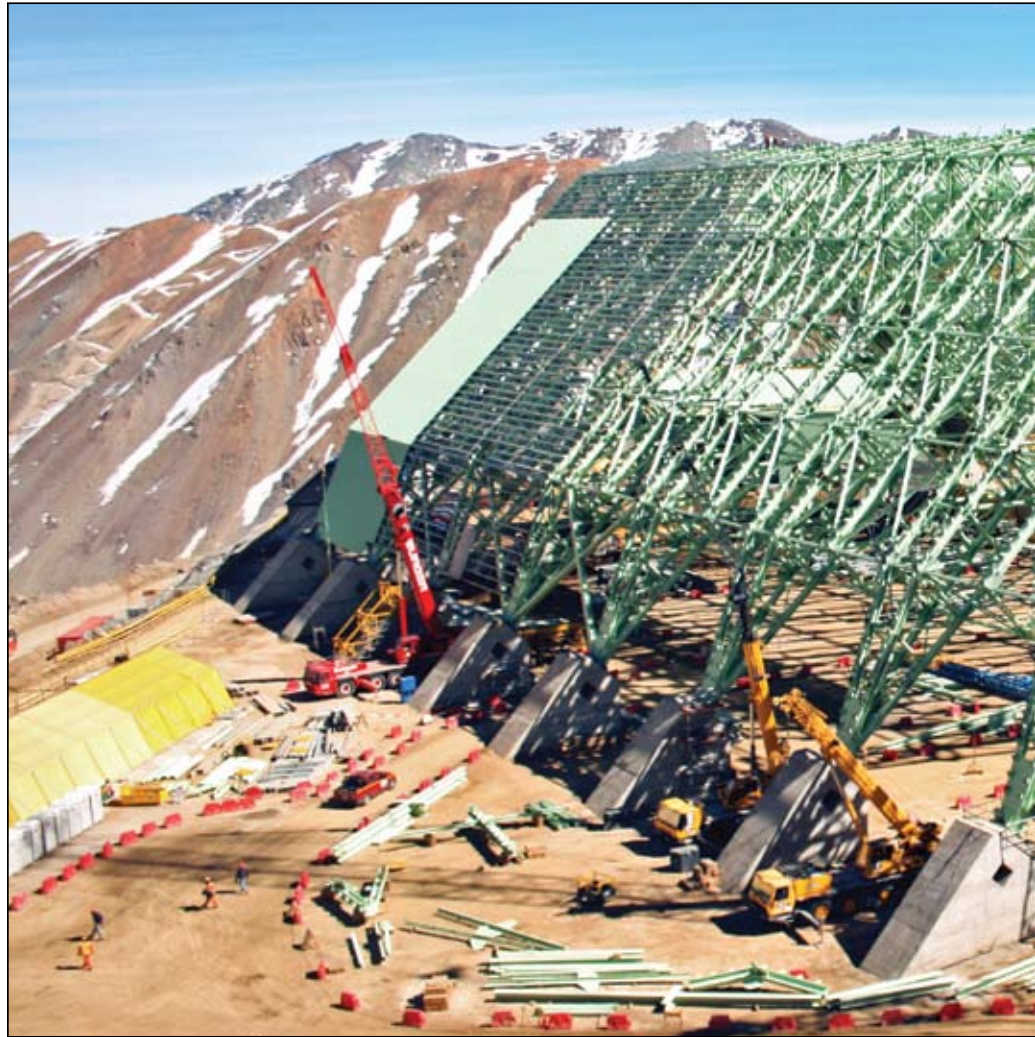
Manitowoc Crane Care visited a remote mining site in Chile to inspect over a dozen Manitowoc cranes and develop a replacement parts list designed to keep those cranes running for the next decade.

Leslie Shalabi reports.

Preventive maintenance is key to maintaining uptime when cranes are working in a demanding setting. When that setting is an open pit copper mine, 12,000 ft (3,600 m) above sea level on a remote mountain in the Chilean Andes, then it becomes even more critical to avoid unscheduled downtime. Bechtel, which is managing an expansion project for the Los Bronces copper mine for customer Anglo American SUR, wanted to make sure it stayed on schedule in the demanding environment. So, the company invited Manitowoc Crane Care account manager Denny Shank and Paul Green from Manitowoc's EnCORE program, to visit the site, inspect its cranes and recommend a replacement parts list for the 12 Grove rough-terrain cranes and two Manitowoc crawler cranes the contractor had on site.

The mine is located high in the Chilean Andes, a grueling two-hour drive from Santiago. Unpaved roads perched on the side of the rugged mountainside led up to a base camp at 10,000 ft (3,000 m). Here, all people entering the mine had to stop for a health check, before continuing on to the construction site.

Bechtel was using its cranes to help build a copper concentrator as well as lay pipeline that would transport copper slurry down the



Manitowoc Crane Care eased parts ordering for its customer in Chile.

mountain for further processing. The Grove rough-terrain cranes on the project ranged in capacity from 28 USt to 90 USt (25 t to 81 t) and had logged anywhere from 1,000 hours to 10,000 hours of use.

Shank spent more than a week thoroughly inspecting the cranes and developing a specialized replacement parts list for each one.

"We inspected all the main components such as bearings and transmissions,

searched for leaks and took a look at all the normal wear components. It was a very thorough inspection that included everything from LMI systems to boom wear pads," he said. "From there, we recommended a specific list of parts for each crane with the goal of keeping that crane up and running for another 10 years."

For Juan Ramirez, Bechtel's equipment superintendent in Latin America, the fact that

maintenance



Bechtel is expanding operations at Los Bronces copper mine.



Grove rough-terrain cranes and Manitowoc crawlers are providing construction support.

Manitowoc representatives visited the remote site was a major benefit.

“Mine construction is very dynamic, and not just the construction phase,” he said. “The terrain and the weather and other new projects mean that we have a unique set of needs. The best way to understand this is to experience it firsthand. It is good for our vendors to see what we are up against.”

In addition to determining the parts list,

Shank also helped the Bechtel staff install and learn to use Manitowoc Crane Care’s GPX2 parts ordering system. This on-line system, which is available to Manitowoc dealers and direct account customers, allows maintenance personnel to instantly order replacement parts. This means in most cases the part can ship in the same day.

In the past, Bechtel personnel at this site would have to figure out what part was

needed, obtain a purchase order from corporate, and then drive down the mountain until they could get cell phone coverage and place the order over the phone. Now, with the GPX2 system in place, they can order the parts with the click of mouse and expect them on site in as little as two days.

After Shank left the site, Bechtel placed orders for all of the replacement parts and fitted them on-site. ♦