



GROVE RT9130E – (130T)



EQUIPMENT SPECIFICATIONS



**WITHOUT
QUESTION**

WWW.IRVINGEQUIPMENT.COM



WITHOUT QUESTION

IRVING EQUIPMENT LIMITED
 1-800-561-CRANE (2726)
WWW.IRVINGEQUIPMENT.COM

INFO

UNIT INFO

Asset Number	CR283
Crane Make	Grove
Crane Model	RT9130E
Type	130T Rough Terrain
Serial Number	230339

DIMENSIONS

Length of carrier	32'
Overall width of carrier	12'5.5"
Transportation height	13'8.25"
Fullspan outriggers c-c	27'10"
Midspan outriggers c-c	19'9"
Axle Spacing	16'2.5"
Tailswing radius	14'3.7"
Center Rot. to rear bumper distance	16'
Center Rot. to front bumper distance	16'
Wt: 40,000ctwt, block, ball, bi-fold, o/r boxes	174,034lbs
Wt: w/o block, ball, 40,000ctwt, bi-fold, o/r box	106,398lbs
Wt: same as above, remove boom	72,898lbs
5-Sheave (80T) hookblock	1,600lbs
Overhaul ball (10T)	690lbs

FEATURES

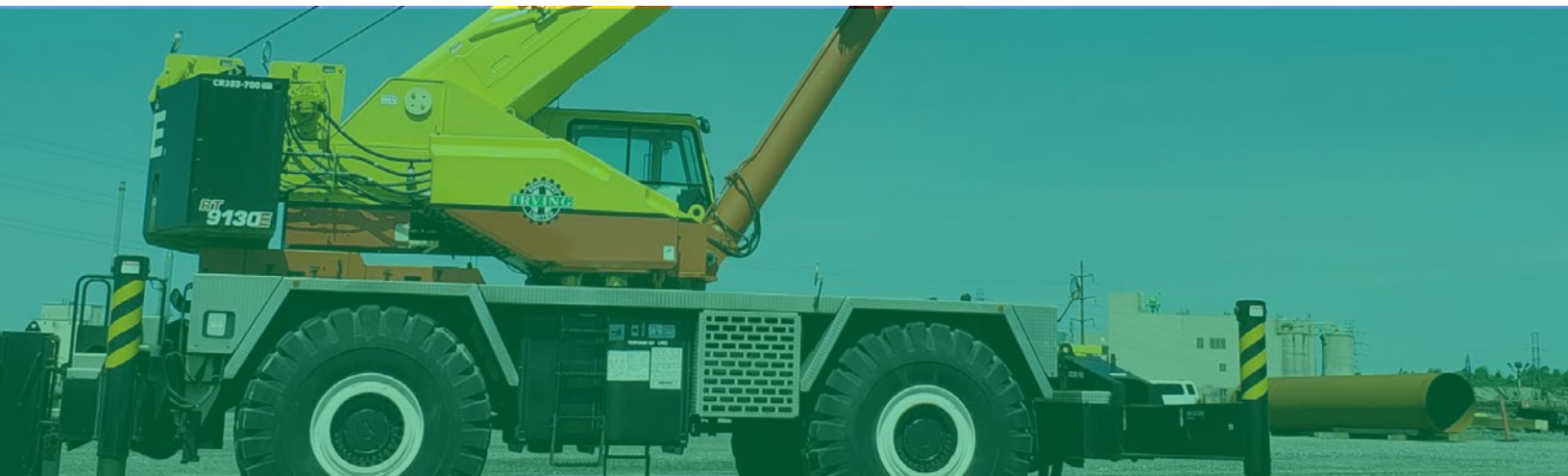
130T capacity
160' Grove MEGAFORM Boom
Hydraulic off-settable jib
Removable outrigger boxes
Compact size compared machines with similar reach & capacity

HOISTING EQUIPMENT

Full counterweight	40,000lbs
Folding jib, length options	36' & 59' (+2 x 26' inserts)
Jib offset angles	0°-40°
Jib type	Hydraulic off-settable
Main boom max. length	160'
Max tip height w/jib ext.	279'

PERFORMANCE INFO

Main Hoist Rope	950' of 3/4"35x7 EIPS Rotation Res.
Auxiliary Hoist Rope	700' of 3/4"35x7 EIPS Rotation Res.
No. Winches	2
Max Line Pull, winch 1	16,800lb, 562'/minute
Max Line Pull, winch 2	16,800lb, 562'/minute
Gradeability	73%
Slewing Speed	2.5 rpm

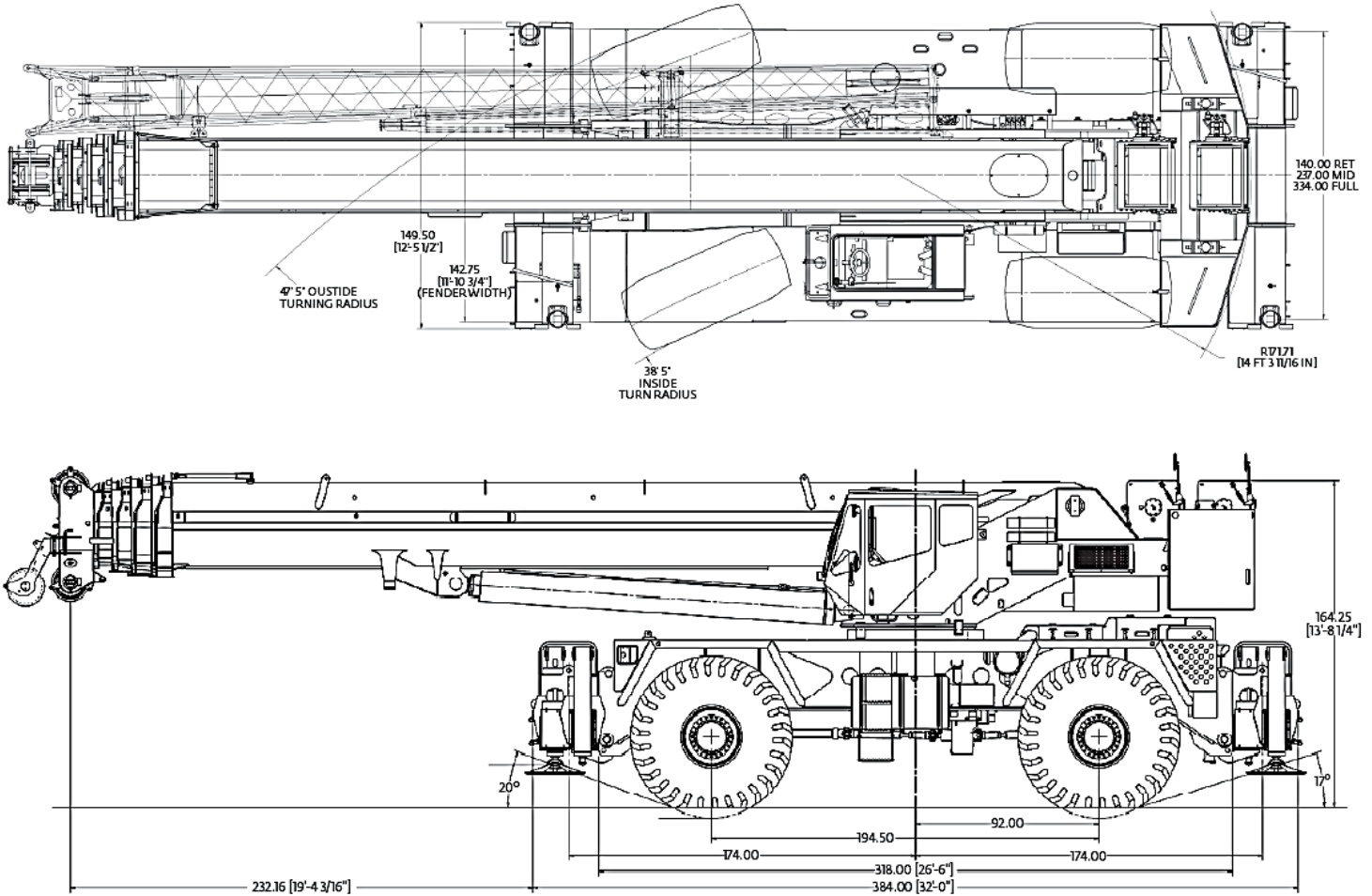




**WITHOUT
QUESTION**

IRVING EQUIPMENT LIMITED
 1-800-561-CRANE (2726)
WWW.IRVINGEQUIPMENT.COM

DIMENSIONS / WEIGHTS



All dimensions are in inches (feet)

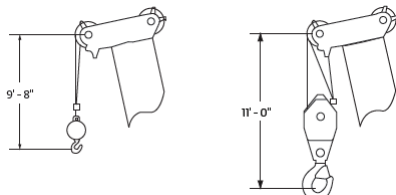
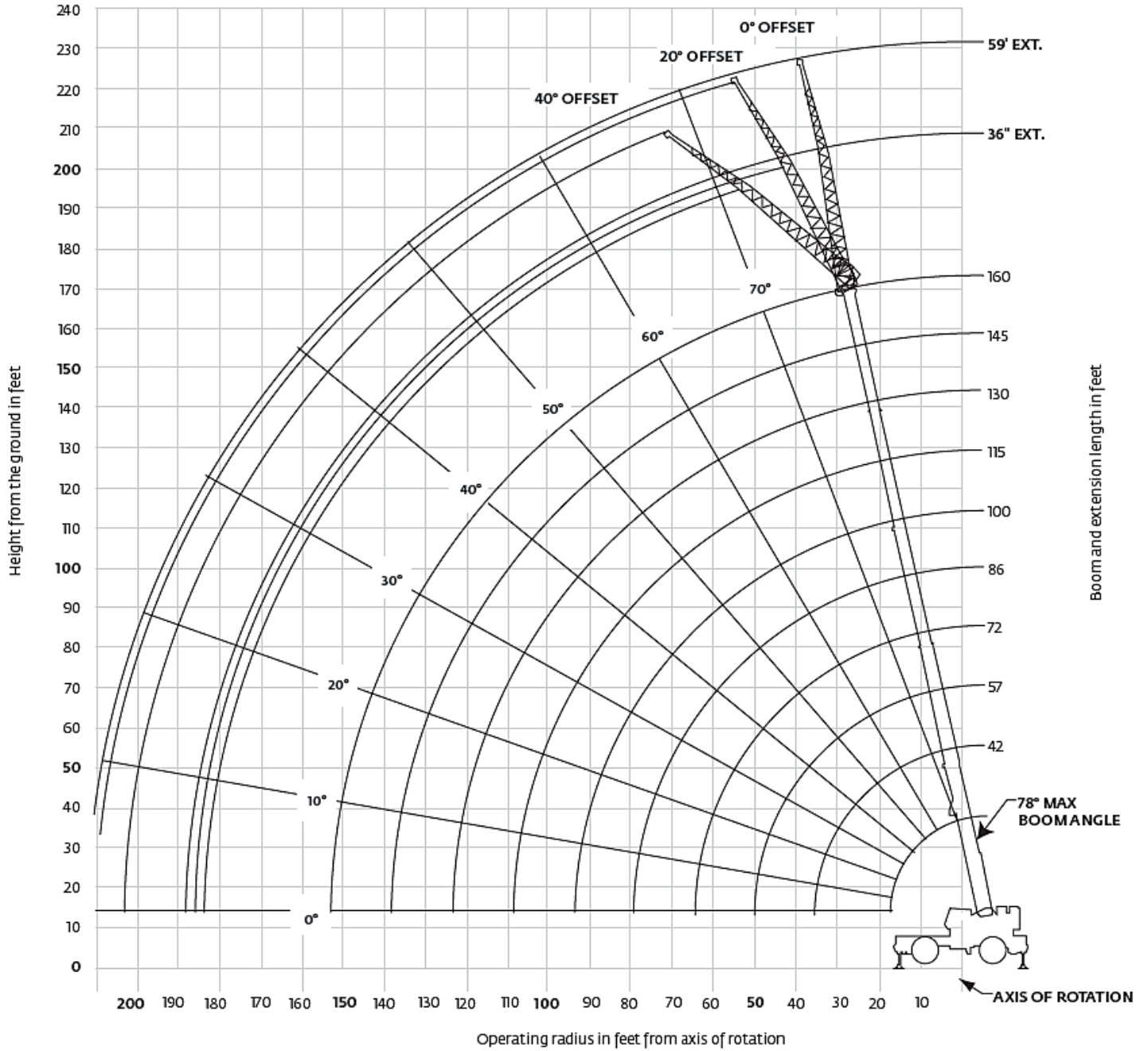
Weights				
	Gross kg (lb)	Front kg (lb)	Rear kg (lb)	Weight of items removed
Basic Machine: Includes 160 ft main boom, main hoist with 950 ft of wire rope and auxiliary hoist with 700 ft of wire rope, manual offsettable bi-fold swingaway, full counterweight, 10 USt headache ball, and 80 USt hookblock	78 946 (174,043)	36 050 (79,475)	42 896 (94,568)	
Sub: Hydraulic offsettable bi-fold swingaway	79 222 (174,651)	36 682 (80,868)	42 540 (93,783)	
Remove: 40,000 lb counterweight, auxiliary hoist with rope, and manual offsettable swingaway	57 539 (126,849)	39 623 (87,353)	17 915 (39,496)	21 734 (47,194)
Remove: 40,000 lb counterweight, auxiliary hoist with rope, manual offsettable swingaway, 80 USt hookblock, 10 USt headache ball, and both outrigger boxes/beams	47 952 (105,715)	34 396 (75,829)	13 556 (29,886)	30 994 (68,328)
Remove: 40,000 lb counterweight, auxiliary hoist with rope, both outrigger boxes/beams, 80 USt hookblock, 10 USt headache ball, and boom assembly	32 765 (72,233)	14 051 (30,977)	18 714 (41,256)	46 181 (101,810)
Remove: 40,000 lb counterweight, auxiliary hoist with rope, both outrigger boxes/beams, 80 USt hookblock, 10 USt headache ball, boom assembly, and all tire/wheels	28 447 (62,713)	11 892 (26,217)	16 555 (36,496)	50 499 (111,330)



**WITHOUT
QUESTION**

IRVING EQUIPMENT LIMITED
 1-800-561-CRANE (2726)
WWW.IRVINGEQUIPMENT.COM

WORKING RANGE – 160ft main boom + 36ft-59ft fixed offset extension



Dimensions are for largest Grove furnished hookblock and headache ball, with anti-two block activated.



WITHOUT QUESTION

IRVING EQUIPMENT LIMITED
 1-800-561-CRANE (2726)
WWW.IRVINGEQUIPMENT.COM

LOAD CHART – Main boom, 40,000lb counterweight, 100% Outriggers

42 ft - 160 ft 40,000 lb 100% 27 ft 10 in spread 360°

#0001

Feet	Main boom length in feet								
	42	57	72	86	100	115	130	145	160
10	+260,000 (71.5)	147,000 (76.5)							
12	224,000 (68.5)	147,000 (74.5)	*127,000 (78)						
15	176,000 (63.5)	147,000 (71.5)	127,000 (76)	*92,600 (78)					
20	127,500 (55.5)	125,500 (65.5)	115,500 (71.5)	86,550 (75.5)	*65,000 (78)				
25	97,300 (46)	95,550 (60)	95,300 (67)	78,900 (72)	62,650 (75)	44,600 (78)			
30	76,900 (34)	75,250 (53.5)	75,050 (62.5)	68,500 (68.5)	56,800 (72)	44,600 (75.5)	43,150 (78)		
35		60,950 (46.5)	60,750 (58)	60,100 (64.5)	50,050 (69)	44,600 (73)	42,200 (76)	32,550 (78)	
40		50,300 (38.5)	50,150 (52.5)	50,550 (60.5)	44,050 (66)	41,400 (70)	38,000 (73.5)	32,550 (76)	25,100 (78)
45		42,050 (28)	41,950 (47)	42,350 (56.5)	38,950 (62.5)	37,450 (67.5)	34,150 (71)	32,550 (74)	24,800 (76.5)
50			35,400 (41)	35,850 (52.5)	34,650 (59)	33,450 (64.5)	31,350 (68.5)	29,550 (71.5)	24,500 (74.5)
55			30,050 (34)	30,550 (47.5)	30,050 (55.5)	30,000 (61.5)	29,200 (66)	26,850 (69.5)	24,000 (72.5)
60			25,600 (24.5)	26,100 (42.5)	25,850 (52)	26,950 (58.5)	26,350 (63.5)	24,700 (67.5)	23,200 (70.5)
65				22,400 (37)	22,150 (48)	23,800 (55.5)	23,850 (61)	22,950 (65)	21,100 (68.5)
70				19,200 (30.5)	18,950 (44)	20,800 (52.5)	21,600 (58.5)	20,850 (62.5)	19,200 (66.5)
75				16,400 (22)	16,200 (39)	18,100 (49)	19,250 (55.5)	19,000 (60.5)	17,500 (64.5)
80					13,800 (34)	15,700 (45.5)	16,900 (52.5)	17,100 (58)	15,750 (62.5)
85					11,650 (28)	13,550 (41.5)	15,000 (49.5)	15,500 (55.5)	14,300 (60)
90					9,770 (19.5)	11,700 (37)	13,100 (46.5)	13,900 (53)	13,100 (58)
95						10,000 (32)	11,450 (43)	12,250 (50)	12,600 (55.5)
100						8,490 (26.5)	9,940 (39.5)	11,000 (47)	11,400 (53)
105						5,690 (18.5)	8,630 (35.5)	9,730 (44)	10,200 (50.5)
110							7,320 (30.5)	8,460 (41)	9,020 (48)
115							6,220 (25)	7,370 (37.5)	8,100 (45.5)
120							5,120 (17.5)	6,280 (33.5)	7,190 (42.5)
125								5,350 (29.5)	6,270 (39.5)
130								4,430 (24)	5,350 (36)
135								2,560 (16.5)	4,560 (32.5)
140									3,770 (28)
Minimum boom angle (°) for indicated length (no load)									23
Maximum boom length (ft) at 0° boom angle (no load)									145

#LMI operating code. Refer to LMI manual for instructions.
 *This capacity is based upon maximum obtainable boom angle.
 +16 parts line required to lift this capacity (using aux. boom nose). Refer to Operator's and Safety Handbook for reeving diagram.
 Note: () Boom angles are in degrees.

Lifting capacities at zero degree boom angle

Boom Angle	Main boom length in feet								
	42	57	72	86	100	115	130	145	160
0°	41,400 (35.3)	24,650 (50)	15,350 (64.6)	9,700 (79.3)	5,250 (94)	3,650 (108.6)	2,450 (123.3)	1,450 (138)	

Note: () Reference radii in feet

AG-829-103576

- ✓ FULL-SERVICE PROVIDER FOR CRANE RENTAL, RIGGING, AND LIFT PLANNING.
- ✓ DAILY, WEEKLY, MONTHLY RATES AVAILABLE
- ✓ DRY-LEASE AND LONG-TERM RENTALS