



MANITEX TM200 – (20T)



EQUIPMENT SPECIFICATIONS



**WITHOUT
QUESTION**

WWW.IRVINGEQUIPMENT.COM



WITHOUT QUESTION

IRVING EQUIPMENT LIMITED
 1-800-561-CRANE (2726)
WWW.IRVINGEQUIPMENT.COM

INFO

IDENTIFICATION

Asset Number	TU768
Crane Make	Manitex
Crane Model	TM200
Type	20T Tractor-Mount
Serial Number	258248

DIMENSIONS

Overall length of carrier, bumper to bumper	31'5"
Overall length, head sheave to rear bumper	31'7.5"
Overall width of carrier	8'
Transportation height	13'2"
Fullspan front outriggers c-c	19'8"
Rear stabilizers c-c	7'5"
Boom length, retracted	230"
Center Rot. to rear bumper distance	13'3"
Center Rot. to front bumper distance	18'2"
Axle spacing steer-drives (tandem drives)	234"
Axle spacing between drives (tandem)	55"
Gross vehicle weight	17,317kg (38,177lb)
Axle weight (steer)	8,347kg (18,401lb)
Axle weight (tandem drives)	8,970kg (19,775lb)

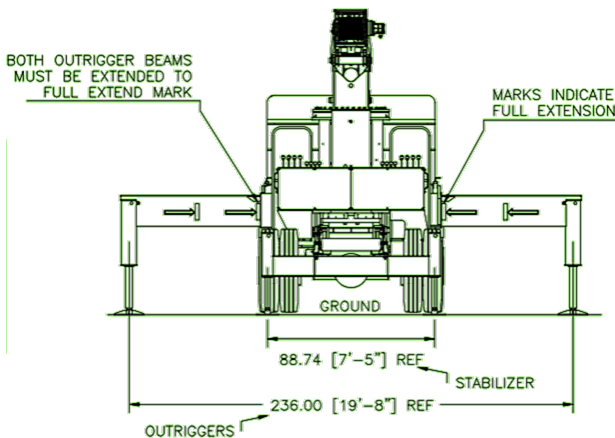
FEATURES

- 6-Section 85' boom
- 2-Speed planetary hoist
- Front bumper stabilizer allows 360° operation
- LMI system with digital display and overload shutdown
- Fifth wheel plate – grab a trailer and self-load/offload

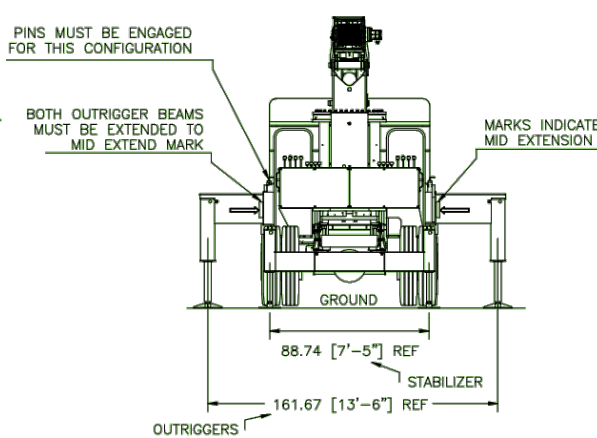
EQUIPMENT INFO

Main boom max. length	85' (95' tip height)
Hoist line length	300'
Slewing speed	1.5-2rpm, adjustable
Boom point	2-Sheave, quick reeve
Winch type	2-speed hydraulic
Hoist line length	300'
Hoist line type	9/16" rotation resistant
Line Speed, Maximum	300 feet per minute
Line Pull, winch 1	11,500lb max., 8,500lb Allowable
Hook block	1-Sheave Johnson, 20T
Overhaul ball	McKissick, 7T swiveling

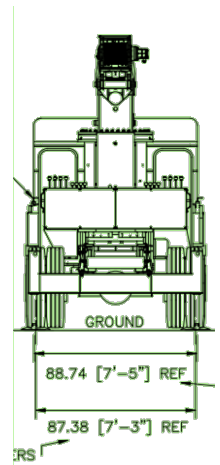
FULL OUTRIGGER EXTENSION



MID-EXTENSION



RETRACTED



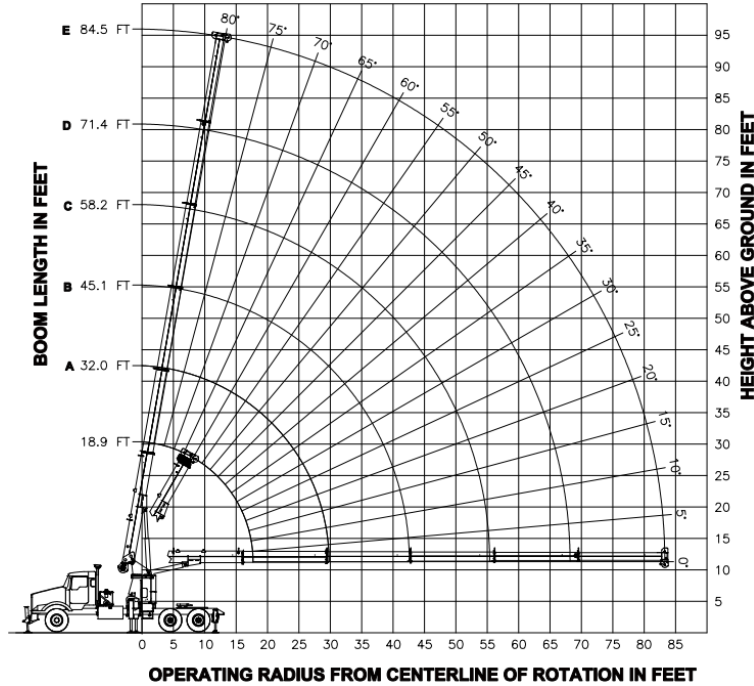


**WITHOUT
QUESTION**

IRVING EQUIPMENT LIMITED
 1-800-561-CRANE (2726)
WWW.IRVINGEQUIPMENT.COM

CAPACITY/RANGE INFO

- FULL EXTENDED OUTRIGGER CONFIGURATION -



- FULL EXTENDED OUTRIGGER CONFIGURATION -

LOAD RADIUS (FT)	18.9 FT		32.0 FT (A)		45.1 FT (B)		58.2 FT (C)		71.4 FT (D)		84.5 FT (E)		LOAD RADIUS (FT)
	LOADED BOOM ANGLE	LOAD CAPACITY (LBS)	LOADED BOOM ANGLE	LOAD CAPACITY (LBS)	LOADED BOOM ANGLE	LOAD CAPACITY (LBS)	LOADED BOOM ANGLE	LOAD CAPACITY (LBS)	LOADED BOOM ANGLE	LOAD CAPACITY (LBS)	LOADED BOOM ANGLE	LOAD CAPACITY (LBS)	
5	72.0	40000											5
8	62.0	25300	74.0	18700									8
10	54.0	21300	70.5	18000	77.0	12600							10
12	45.0	18200	66.5	17100	74.0	12600	78.0	10000					12
14	35.0	16000	62.0	15000	71.5	12600	76.0	10000					14
16	21.0	14300	58.0	13500	69.0	12600	74.0	10000	78.0	9900			16
20			49.0	11000	63.0	10300	70.0	9300	75.0	8000	77.0	4600	20
25			35.0	8900	55.5	8300	65.0	7600	70.5	6600	74.0	4600	25
30					47.0	6800	59.0	6200	66.0	5600	71.0	4300	30
35					37.0	5330	53.0	5200	61.5	4700	67.0	3900	35
40					23.0	3880	46.0	4100	57.0	4000	63.0	3600	40
45							39.0	3560	51.5	3400	59.0	3100	45
50							29.0	2730	46.0	3000	55.0	2700	50
55									40.0	2500	50.5	2300	55
60									33.0	2010	46.0	2000	60
65									24.0	1580	41.0	1700	65
70											35.0	1400	70
75											28.0	1180	75
80											19.0	850	80
	0	9200	0	4300	0	2000	0	1200	0	600	0	350	

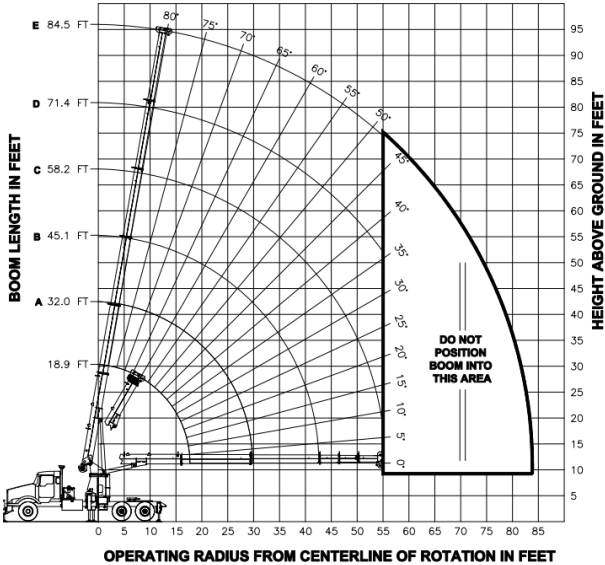


WITHOUT QUESTION

IRVING EQUIPMENT LIMITED
 1-800-561-CRANE (2726)
WWW.IRVINGEQUIPMENT.COM

INFO

- MIDSPAN OUTRIGGER CONFIGURATION -

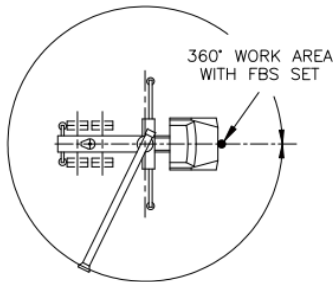


ALLOWABLE LINE PULL						WARNING
1 PART LINE	2 PART LINE	3 PART LINE	4 PART LINE	5 PART LINE	6 PART LINE	
						ANTI-TWO-BLOCK SYSTEM MUST BE IN GOOD OPERATING CONDITION BEFORE OPERATING CRANE. REFER TO OWNER'S MANUAL. KEEP AT LEAST 3 WRAPS OF LOAD LINE ON DRUM AT ALL TIMES. 9/16" - 6X25 IWRC (3.5:1 S.F.) - 29750 LBS. MINIMUM BREAKING STRENGTH 9/16" ROT RESISTANT (5.0:1 S.F.) - 38500 LBS. MINIMUM BREAKING STRENGTH
8500 LBS	17000 LBS	25500 LBS	34000 LBS	40000 LBS	40000 LBS	
7700 LBS	15400 LBS	23100 LBS	30800 LBS	38500 LBS	40000 LBS	

- INTERMEDIATE OUTRIGGER CONFIGURATION -

LOAD RADIUS (FT)	18.9 FT		32.0 FT (A)		45.1 FT (B)		58.2 FT (C)		71.4 FT (D)		84.5 FT (E)		LOAD RADIUS (FT)
	LOADED BOOM ANGLE	LOAD CAPACITY (LBS)	LOADED BOOM ANGLE	LOAD CAPACITY (LBS)	LOADED BOOM ANGLE	LOAD CAPACITY (LBS)	LOADED BOOM ANGLE	LOAD CAPACITY (LBS)	LOADED BOOM ANGLE	LOAD CAPACITY (LBS)	LOADED BOOM ANGLE	LOAD CAPACITY (LBS)	
5	72.0	40000											5
8	62.0	25300	74.0	18700									8
10	54.0	21300	70.5	18000	77.0	12600							10
12	45.0	18200	66.5	17100	74.0	12600	78.0	10000					12
14	35.0	16000	62.0	15000	71.5	12600	76.0	10000					14
16	21.0	14190	58.0	13500	69.0	12600	74.0	10000	78.0	9900			16
20			49.0	6170	63.0	8650	70.0	9300	75.0	8000	77.0	4600	20
25			35.0	4050	55.5	4100	65.0	6130	70.5	6590	74.0	4600	25
30					47.0	2580	59.0	3150	66.0	4610	71.0	4300	30
35					37.0	1590	53.0	2150	61.5	2510	67.0	3630	35
40					23.0	870	46.0	1420	57.0	1810	63.0	2020	40
45							39.0	920	51.5	1230	59.0	1470	45
50									46.0	820	55.0	1050	50
55											50.5	710	55
60													60

AREA OF OPERATION



- ✓ FULL-SERVICE PROVIDER FOR CRANE RENTAL, RIGGING, AND LIFT PLANNING.
- ✓ DAILY, WEEKLY, MONTHLY RATES AVAILABLE
- ✓ DRY-LEASE AND LONG-TERM RENTALS
- ✓ OUR PURPOSE IS TO LEAVE 'NO ROOM FOR DOUBT'!