



GROVE TMS9000E-2



EQUIPMENT SPECIFICATIONS



**WITHOUT
QUESTION**

WWW.IRVINGEQUIPMENT.COM



WITHOUT QUESTION

IRVING EQUIPMENT LIMITED
 1-800-561-CRANE (2726)
WWW.IRVINGEQUIPMENT.COM

INFO

IDENTIFICATION

Asset Number	Multiple
Crane Make	Grove
Crane Model	TMS9000-2
Type	115T Hydraulic
Serial Number	Multiple

DIMENSIONS

Overall length of carrier	37'
Overall width of carrier	8.32'
Transportation height	11.88'
Turning Radius, curb clearance	46.17'
Boom nose	1.92'
Outriggers, front to rear length	18.33'
Tailswing radius	13.98
Overall length, boom in rest.	44.21'
Front cluster axle spacing	5'
Rear cluster axle spacing	5'
Front to rear cluster axle spacing (c-c)	18.45
Basic Machine Weight, no ctwt, hyd. Jib stowed, ball, 3-sheave block onboard	87,300lb
Dolly	3-Axle

FEATURES

5-Section Full-Power MEGAFORM Boom
TWIN-LOCK Boom Pinning Section
4-Position outriggers (0%, 25%, 75%, 100%)
Power luffing extension
Max 48,500lb Counterweight w/ Hydraulic removal System

HOISTING INFO

Full counterweight	48,500lbs
Fixed jib, length options	34.5', 57.6', 80.8'
Maximum tip height	260'
Luffing jib	Live, hydraulic 0-45deg.
Main boom max. length	169.3'
Swing speed	1.9rpm
Travel Speed	105kmh
Fuel tank capacity	376L
Hook blocks	Ball, 1-shv, 3-shv, 5shv
Line Pull, max. single line	17,160lbs
Max line speed	370fpm
Gradeability	70°
Hoist rope length	820'
Hoist rope diameter	3/4"

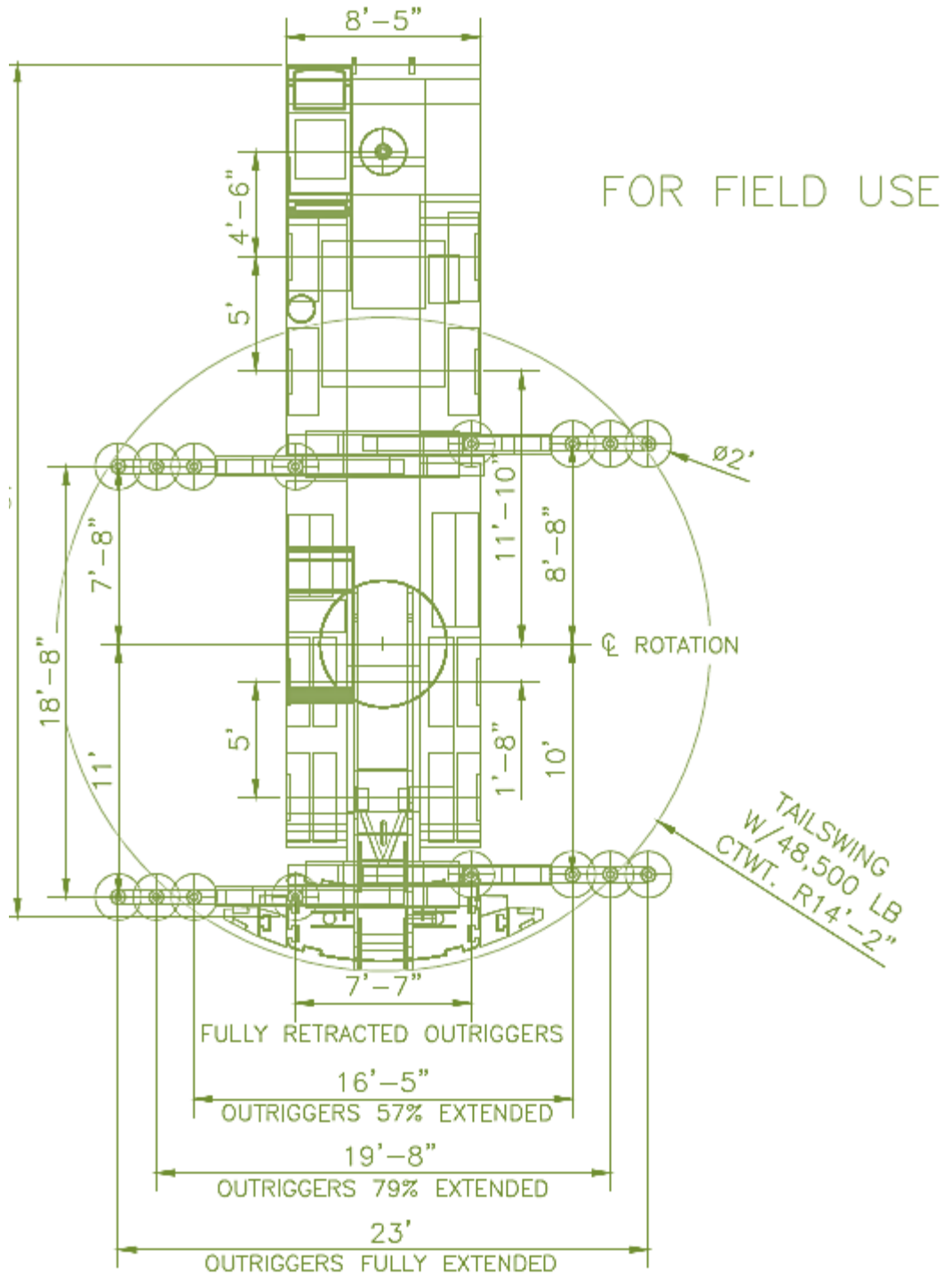




**WITHOUT
QUESTION**

IRVING EQUIPMENT LIMITED
1-800-561-CRANE (2726)
WWW.IRVINGEQUIPMENT.COM

KEY DIMENSIONS

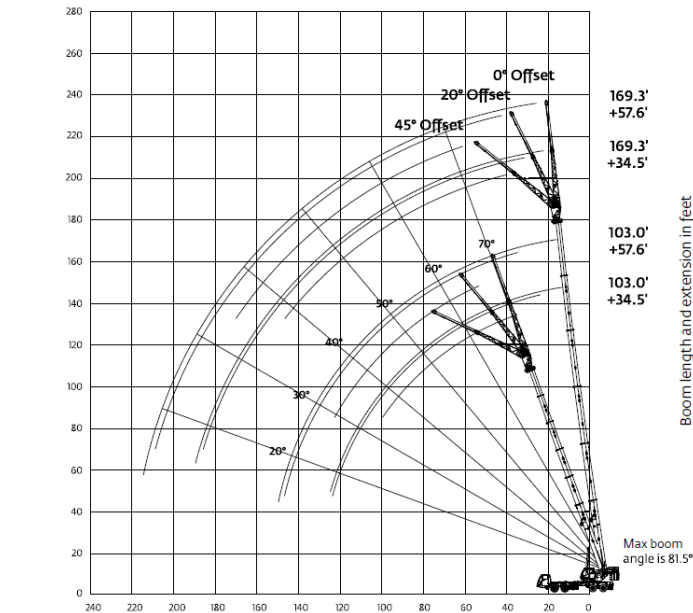
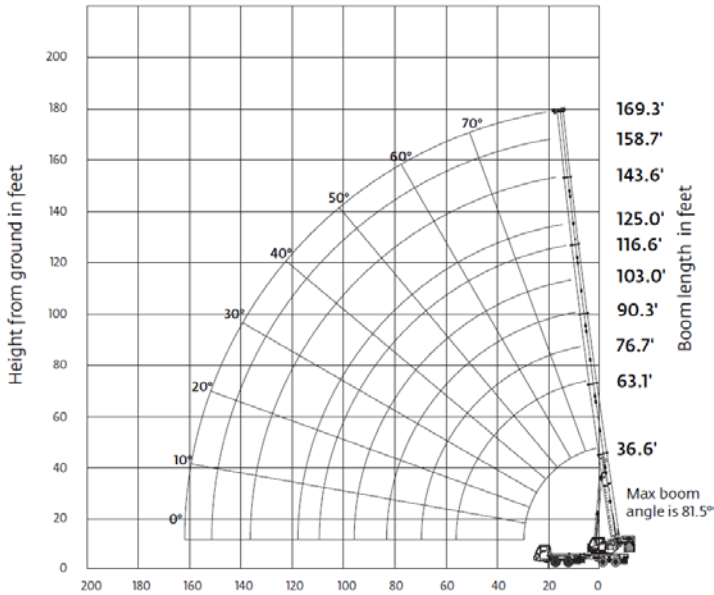




WITHOUT QUESTION

IRVING EQUIPMENT LIMITED
 1-800-561-CRANE (2726)
WWW.IRVINGEQUIPMENT.COM

CAPACITY/RANGE INFO



36.6 ft - 169.3 ft Fixed lengths, 48,500 lb, 100% 23 ft, 360°

Feet	37'	50'	62-64'	75-77'	88-90'	100-103'	111-114'	122-126'	136-140'	147-154'	159-165'	169'	
8.0	230,000*												
9.0	180,000	164,000											
10.0	173,500	158,000	146,000	128,500									
12.0	155,500	148,500	135,500	124,000	94,600								
15.0	134,500	135,500	123,500	114,000	94,600	74,950							
20.0	108,000	109,500	110,000	99,950	93,900	73,500	58,050	45,800					
25.0	84,850	86,450	87,050	86,650	84,150	71,000	58,050	45,800	37,900	30,000			
30.0		70,450	71,050	70,700	72,000	62,850	56,550	45,800	37,900	30,000	25,250	21,200	
35.0		58,000	58,350	59,900	59,050	56,150	50,350	45,800	37,900	30,000	25,250	21,200	
40.0		48,650	48,300	49,800	49,000	50,350	45,000	43,550	37,900	30,000	25,250	21,200	
45.0			41,450	42,300	41,500	42,800	40,750	38,750	37,900	30,000	25,250	21,200	
50.0			36,350	36,150	37,350	36,450	36,250	34,800	34,450	30,000	25,250	21,200	
55.0			31,300	31,200	32,400	31,550	31,400	31,900	31,200	29,400	25,250	21,200	
60.0				27,300	28,400	27,500	28,250	28,050	27,300	27,300	24,850	21,200	
65.0				25,350	25,000	24,150	24,850	24,650	24,050	23,900	23,150	20,600	
70.0				22,200	22,200	21,700	22,400	21,850	21,800	21,100	21,650	19,300	
75.0				17,600		20,200	19,600	20,000	19,600	19,400	19,200	18,100	
80.0					19,250	18,500	18,000	18,050	17,400	17,900	17,250	17,000	
85.0						16,900	16,350	16,400	15,800	16,300	15,700	15,700	
90.0						15,400	14,950	14,850	14,900	14,750	14,300	14,200	
95.0							14,200	13,500	13,600	13,400	12,950	12,850	
100.0							13,050	12,350	12,550	12,350	11,800	11,650	
105.0								10,900	11,250	11,500	11,300	10,700	10,600
110.0									10,600	10,550	10,350	9,780	9,650
115.0									9,480	9,680	9,490	8,910	8,790
120.0										8,900	8,710	8,130	8,010
125.0										8,190	7,990	7,420	7,290
130.0										7,770	7,340	6,770	6,640
135.0											6,750	6,170	6,050
140.0											6,200	5,620	5,500
145.0											5,710	5,120	4,990
150.0												4,650	4,530
155.0												4,230	4,100
160.0													3,700

169.3 ft Fixed lengths, 34.5 ft - 57.6 ft Manual offsettable swingaway, 26.2 ft Insert, 48,500 lb, 100% 23 ft, 360°

Feet	34.5 ft			57.6 ft			83.8 ft		
	0°	20°	45°	0°	20°	45°	0°	20°	45°
40.0	10,750								
45.0	10,750			6,660					
50.0	10,750	10,900		6,660					
55.0	10,750	10,900		6,660			6,040		
60.0	10,750	10,900	11,200	6,660			6,040		
65.0	10,750	10,900	11,200	6,660			6,040		
70.0	10,750	10,900	11,200	6,660	7,190		6,040		
75.0	10,750	10,900	11,200	6,660	7,190		6,040		
80.0	10,750	10,900	11,200	6,660	7,190	6,090	6,040		
85.0	10,750	10,900	11,050	6,660	7,190	6,010	6,040	6,410	
90.0	10,750	10,850	10,900	6,660	7,190	5,930	6,040	6,410	
95.0	10,450	10,250	10,300	6,660	7,170	5,860	6,040	6,410	4,880
100.0	9,820	9,650	9,950	6,660	7,020	5,800	6,040	6,240	4,730
105.0	9,240	9,110	9,220	6,660	6,880	5,740	6,040	6,020	4,600
110.0	8,700	8,610	8,720	6,660	6,750	5,690	6,040	5,820	4,470
115.0	8,200	8,130	8,250	6,660	6,620	5,620	6,040	5,630	4,350
120.0	7,740	7,690	7,810	6,660	6,510	5,560	6,040	5,450	4,240
125.0	7,310	7,280	7,400	6,470	6,400	5,490	5,800	5,280	4,130
130.0	6,880	6,860	6,980	6,310	6,160	5,440	5,460	5,120	4,030
135.0	6,480	6,470	6,590	6,160	6,020	5,390	5,150	4,970	3,930
140.0	6,090	6,090	6,210	6,010	5,870	5,340	4,850	4,830	3,830
145.0	5,720	5,720	5,840	5,860	5,720	5,190	4,570	4,690	3,740
150.0	5,370	5,370	5,490	5,710	5,570	5,140	4,300	4,420	3,660
155.0	5,030	5,030	5,150	5,560	5,420	4,970	3,860	4,220	3,580
160.0	4,700	4,700	4,820	5,410	5,270	4,820	3,440	3,980	3,500
165.0	4,380	4,380	4,500	5,260	5,120	4,670	3,050	3,630	3,430
170.0	4,070	4,070	4,190	5,110	4,970	4,520	2,680	3,220	3,360
175.0	3,770	3,770	3,890	4,960	4,820	4,370	2,340	2,850	3,170
180.0	3,480	3,480	3,600	4,810	4,670	4,220	2,020	2,490	2,770
185.0	3,200	3,200	3,320	4,660	4,520	4,070	1,720	2,150	2,400
190.0	2,930	2,930	3,050	4,510	4,370	3,920	1,430	1,840	
195.0	2,670	2,670	2,790	4,360	4,220	3,770	1,170	1,540	
200.0	2,420	2,420	2,540	4,210	4,070	3,620		1,250	

- ✓ FULL-SERVICE PROVIDER FOR CRANE RENTAL, RIGGING, AND LIFT PLANNING.
- ✓ DAILY, WEEKLY, MONTHLY RATES AVAILABLE
- ✓ DRY-LEASE AND LONG-TERM RENTALS
- ✓ OUR PURPOSE IS TO LEAVE 'NO ROOM FOR DOUBT'!