



MANITEX 50155SHL – (50T)



EQUIPMENT SPECIFICATIONS



**WITHOUT
QUESTION**

WWW.IRVINGEQUIPMENT.COM



WITHOUT QUESTION

IRVING EQUIPMENT LIMITED
 1-800-561-CRANE (2726)
WWW.IRVINGEQUIPMENT.COM

INFO

IDENTIFICATION

Asset Number	TU767
Crane Make	Manitex
Crane Model	50155SHL
Type	50T Long-reach
Serial Number	260518

DIMENSIONS

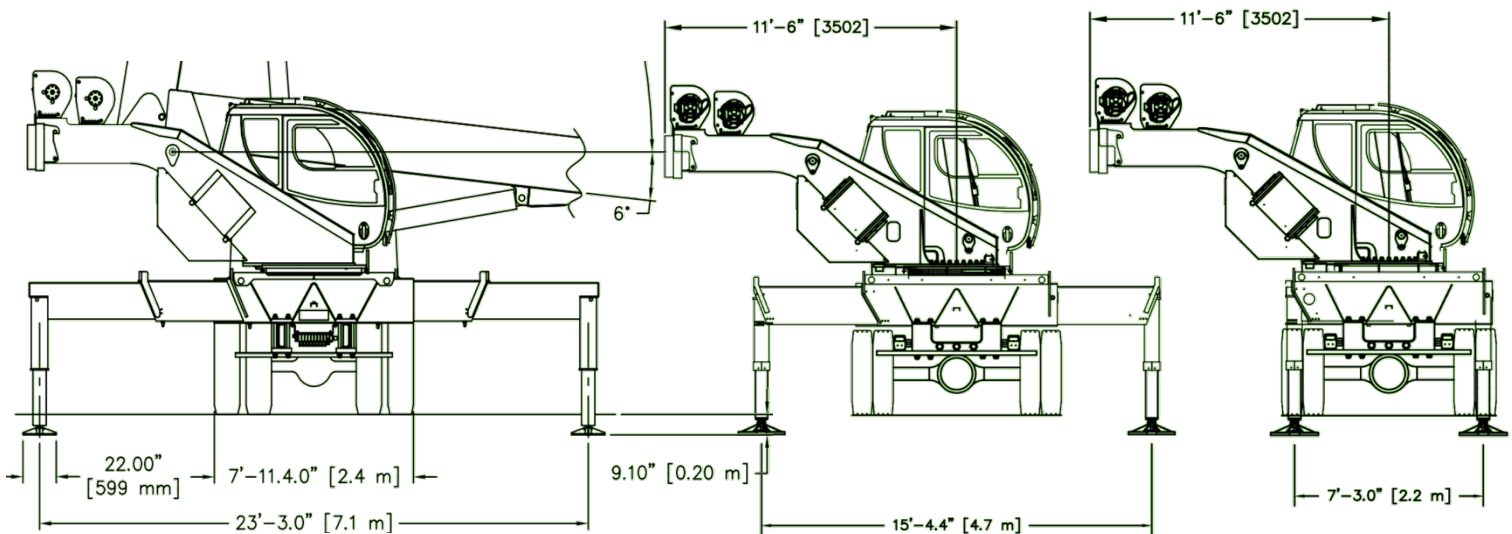
Overall length of carrier, bumper to bumper	43'7.75"
Overall length, head sheave to rear bumper	46'0"
Overall width of carrier	8'0"
Transportation height	13'1"
Fullspan outriggers c-c	23'3"
Midspan outriggers c-c	15'5"
Retracted outriggers c-c	7'-3"
Center Rot. to rear bumper distance	10'0"
Center Rot. to front bumper distance	33'7.75"
Axle spacing front cluster (tandem steer)	72"
Axle spacing rear cluster (tridem)	59", 59"
Axle spacing front to rear (c-c)	310"
Axle weight (tandem steers)	14,860kg
Axle weight (tridem drives)	21,650kg

OPERATOR FEATURES

5-Section hydraulic boom w/39' jib extension
Free-swing, continuous rotation
Front bumper stabilizer
Tilttable, enclosed cab
LMI system, rated capacity limiter, and function cutouts

PERFORMANCE INFO

Slewing speed	1.5-2rpm, adjustable
Fixed jib, length options	39'
Fixed jib, offset angles	30° or 60° offset
2-sheave, 4-position boom nose	0°, 15°, 30°
Main boom max. length	155' (163.4' tip height)
Max tip height with jib	202.4'
Winch type	2-speed hydraulic
Line length	500'
Line type	5/8" rotation resistant
Line Speed, Maximum	453fpm
Line Pull, winch 1	10,000lbs single part line
Hook block	3-Sheave McKissick, 35T
Overhaul ball	McKissick, 5T swiveling
Fixed personnel basket	2-person, rotating





WITHOUT QUESTION

IRVING EQUIPMENT LIMITED
 1-800-561-CRANE (2726)
WWW.IRVINGEQUIPMENT.COM

CAPACITY/RANGE INFO

Height (ft.)	Boom Length 38.5 ft.			Boom Length 63 ft. (A)			Boom Length 74 ft. (B)			Boom Length 86 ft. (C)			Boom Length 97 ft. (D)		
	Code 1 Over Rear (lbs.)	Code 3 Full 360° (lbs.)	Code 3 Full 360° (lbs.)	Code 1 Over Rear (lbs.)	Code 3 Full 360° (lbs.)	Code 3 Full 360° (lbs.)	Code 1 Over Rear (lbs.)	Code 3 Full 360° (lbs.)	Code 3 Full 360° (lbs.)	Code 1 Over Rear (lbs.)	Code 3 Full 360° (lbs.)	Code 3 Full 360° (lbs.)	Code 1 Over Rear (lbs.)	Code 3 Full 360° (lbs.)	Code 3 Full 360° (lbs.)
6	73.5	100,000	100,000												
8	70.5	85,400	85,400												
10	67	75,100	75,100	77	40,000	40,000									
12	64	67,100	67,100	75	40,000	40,000	78	37,700	37,700						
15	58.8	57,700	57,700	72.5	40,000	40,000	75.5	36,340	36,340	78.5	31,000	31,000			
20	49	46,200	46,200	67.5	38,250	38,250	72	33,380	33,380	75	28,200	28,200	77.5	24,120	24,120
25	38	37,290	37,290	62.5	35,040	35,040	67.5	30,620	30,620	71.5	25,970	25,970	74.5	22,200	22,200
30	22.5	28,580	28,580	57	30,700	30,700	63	28,020	28,020	68	23,950	23,950	71	20,480	20,480
35				51.5	25,340	25,140	58.5	25,580	25,470	64	22,080	22,080	68	18,670	18,670
40				45	21,000	19,460	54	21,440	19,780	60.5	20,370	20,010	65	17,210	17,170
45				38	17,940	15,470	48.5	18,200	15,780	56.5	18,380	16,010	61.5	15,920	15,920
50				29.5	15,320	12,500	43	15,590	12,820	52	15,780	13,040	58	14,720	13,190
55				17	12,420	10,180	37	13,440	10,530	47.5	13,640	10,760	54	13,620	10,900
60							29	11,640	8,700	42.5	11,850	8,940	50	11,980	9,090
65							19	10,030	7,200	37	10,330	7,460	46	10,460	7,610
70										30.5	9,010	6,220	41.5	9,150	6,380
75										22.5	7,860	5,170	36.5	8,020	5,340
80										7.5	4,360	4,230	30.5	7,020	4,450
85													23.5	6,120	3,670
90													12	4,140	2,970
SJ	960 lbs.			590 lbs.			500 lbs.			430 lbs.			390 lbs.		
EJ	2,620 lbs.			2,270 lbs.			2,190 lbs.			2,130 lbs.			2,080 lbs.		

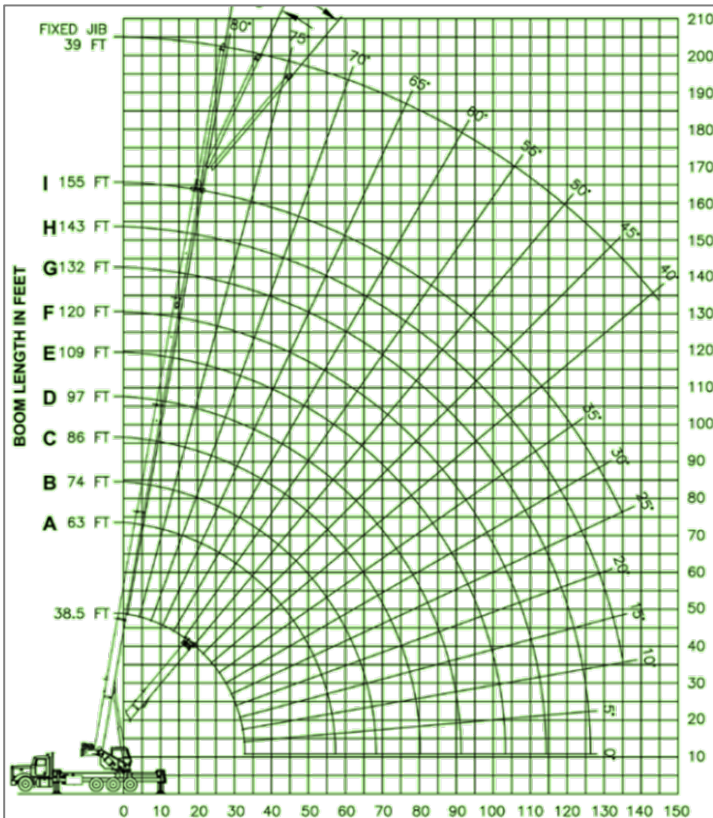
Height (ft.)	Boom Length 109 ft. (E)			Boom Length 120 ft. (F)			Boom Length 132 ft. (G)			Boom Length 143 ft. (H)			Boom Length 155 ft. (I)		
	Code 1 Over Rear (lbs.)	Code 3 Full 360° (lbs.)	Code 3 Full 360° (lbs.)	Code 1 Over Rear (lbs.)	Code 3 Full 360° (lbs.)	Code 3 Full 360° (lbs.)	Code 1 Over Rear (lbs.)	Code 3 Full 360° (lbs.)	Code 3 Full 360° (lbs.)	Code 1 Over Rear (lbs.)	Code 3 Full 360° (lbs.)	Code 3 Full 360° (lbs.)	Code 1 Over Rear (lbs.)	Code 3 Full 360° (lbs.)	Code 3 Full 360° (lbs.)
25	77	18,000	18,000	79	16,260	16,260									
30	74	17,000	17,000	76.5	15,280	15,280	78	13,500	13,500	79.5	11,500	11,500			
35	71.5	15,920	15,920	74	14,270	14,270	76	12,900	12,900	77.5	11,300	11,300	79	9,000	9,000
40	68.5	14,700	14,700	71.5	13,310	13,310	74	12,000	12,000	75.5	11,000	11,000	77	9,000	9,000
45	65.5	13,570	13,570	69	12,410	12,410	71.5	11,300	11,300	73.5	10,460	10,460	75.5	9,000	9,000
50	62.5	12,540	12,540	66	11,600	11,600	69	10,550	10,550	71.5	9,460	9,460	73.5	8,800	8,800
55	59.5	11,580	11,020	63.5	10,840	10,840	67	9,610	9,610	69.5	8,880	8,880	71.5	8,320	8,320
60	56	10,690	9,210	60.5	9,960	9,290	64.5	9,000	9,000	67.5	8,330	8,330	69.5	7,820	7,820
65	53	9,870	7,730	57.5	9,230	7,810	62	8,430	7,880	65	7,800	7,800	67.5	7,340	7,340
70	49	9,150	6,500	54.5	8,550	6,580	59	7,880	6,650	62.5	7,300	6,700	65.5	6,880	6,750
75	45.5	8,130	5,460	51.5	7,930	5,540	56.5	7,390	5,610	60.5	6,820	5,660	63.5	6,410	5,710
80	41.5	7,130	4,570	48	7,210	4,660	53.5	6,880	4,730	58	6,360	4,780	61.5	5,980	4,820
85	37	6,250	3,800	44.5	6,330	3,890	50.5	6,360	3,960	55.5	5,940	4,010	59	5,560	4,050
90	32	5,470	3,130	41	5,550	3,220	47.5	5,620	3,290	52.5	5,540	3,340	57	5,170	3,380
95	25.5	4,750	2,530	36.5	4,850	2,630	44.5	4,920	2,700	50	4,960	2,750	54.5	4,780	2,790
100	17	3,830	1,990	32	4,210	2,100	41	4,280	2,180	47	4,330	2,230	52	4,370	2,270
105				26	3,630	1,620	37	3,710	1,710	44	3,760	1,760	49.5	3,800	1,800
110				19	3,030	1,190	33	3,190	1,280	40.5	3,240	1,340	47	3,280	1,380
115							28	2,700	900	37	2,760	950	44	2,800	1,000
120							22	2,260		33	2,320		41	2,370	
125							12	860		28.5	1,910		37.5	1,960	
130										23	1,530		34	1,590	
135										14.5	1,170		29.5	1,240	
SJ	340 lbs.			310 lbs.			280 lbs.			260 lbs.			240 lbs.		
EJ	2,050 lbs.			2,020 lbs.			1,990 lbs.			1,970 lbs.			1,950 lbs.		



WITHOUT QUESTION

IRVING EQUIPMENT LIMITED
 1-800-561-CRANE (2726)
WWW.IRVINGEQUIPMENT.COM

INFO



39 FT. FIXED JIB LOAD CAPACITIES									
Boom Length (ft.)	0° Offset			15° Offset			30° Offset		
	Over rear (lbs.)	Full 360° (lbs.)		Over rear (lbs.)	Full 360° (lbs.)		Over rear (lbs.)	Full 360° (lbs.)	
40	80	4,000	4,000						
45	78	4,000	4,000						
50	77.5	4,000	4,000	80	4,000	4,000			
55	75.5	4,000	4,000	78	4,000	4,000			
60	74	4,000	4,000	76.5	4,000	4,000	80	4,000	4,000
65	72.5	4,000	4,000	75	4,000	4,000	78	4,000	4,000
70	71	4,000	4,000	73.5	4,000	4,000	76	4,000	4,000
75	69.5	4,000	4,000	72	4,000	4,000	74.5	3,880	3,880
80	68	4,000	4,000	71	3,940	3,940	73	3,730	3,730
85	66.5	3,860	3,360	69.5	3,780	3,780	71.5	3,570	3,570
90	65	3,720	3,720	67.5	3,630	3,630	70	3,430	3,430
95	63.5	3,430	3,240	66	3,480	3,480	68	3,290	3,290
100	61.5	3,150	2,700	64.5	3,340	3,210	66.5	3,160	3,160
105	60	2,880	2,230	62.5	3,180	2,700	65	3,030	3,030
110	58	2,610	1,800	61	2,880	2,230	63	2,920	2,590
115	56	2,360	1,410	59	2,610	1,810	61	2,800	2,140
120	54.5	2,130	1,060	57	2,350	1,430	59	2,570	1,730
125	52.5	1,900		55	2,110	1,080	57	2,290	1,350
130	50.5	1,690		53	1,880		55	2,040	1,000
135	48.5	1,490		51	1,660		53	1,810	
140	46	1,230		48.5	1,460		50.5	1,590	
145	43.5	930		46.5	1,200		48	1,380	
150				44	890		45.5	1,050	

- ✓ FULL-SERVICE PROVIDER FOR CRANE RENTAL, RIGGING, AND LIFT PLANNING.
- ✓ DAILY, WEEKLY, MONTHLY RATES AVAILABLE
- ✓ DRY-LEASE AND LONG-TERM RENTALS
- ✓ OUR PURPOSE IS TO LEAVE 'NO ROOM FOR DOUBT'!