



MANITEX 50110S (50T)



EQUIPMENT SPECIFICATIONS



**WITHOUT
QUESTION**

WWW.IRVINGEQUIPMENT.COM



WITHOUT QUESTION

IRVING EQUIPMENT LIMITED
 1-800-561-CRANE (2726)
WWW.IRVINGEQUIPMENT.COM

INFO

IDENTIFICATION

Asset Number	TU694,695,717
Crane Make	Manitex
Crane Model	50110S
Type	50T Boom Truck
Serial Number	Multiple

DIMENSIONS

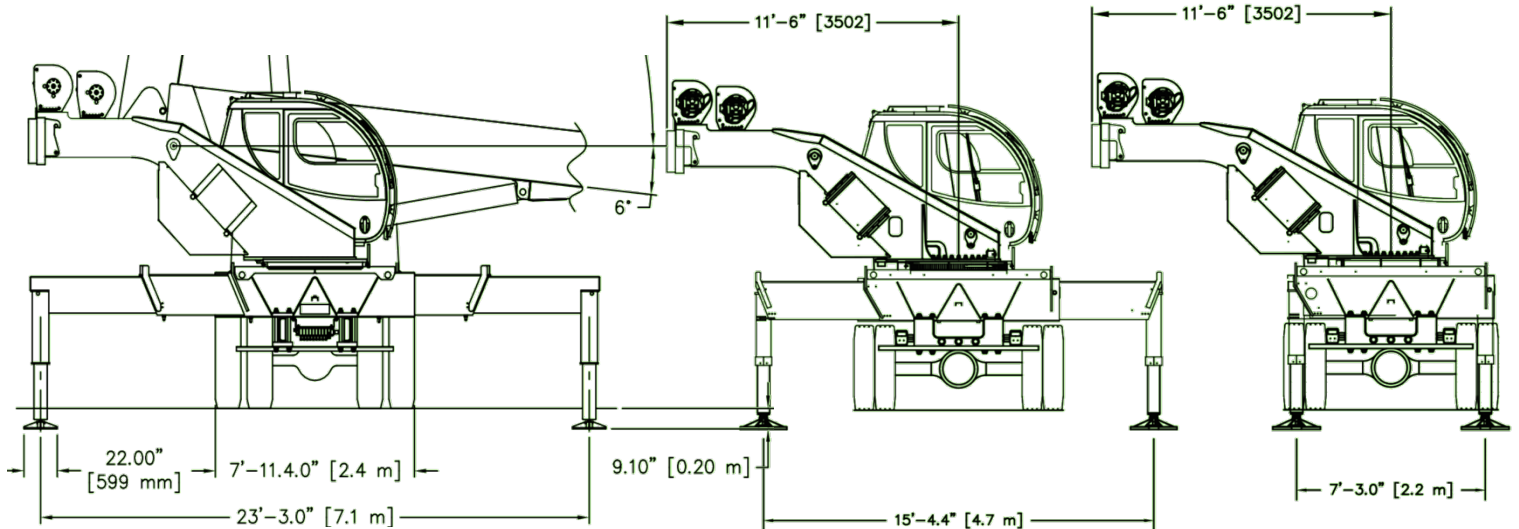
Overall length of carrier, bumper to bumper	38' 7"
Overall length, head sheave to rear bumper	40' 9"
Overall width of carrier	8'0"
Transportation height	13'4"
Fullspan outriggers c-c	23'3"
Midspan outriggers c-c	15'4"
Retracted outriggers c-c	7'-3"
Center Rot. to rear bumper distance	11'4.5"
Center Rot. to front bumper distance	27' 2.5"
Axle spacing front cluster (tandem steer)	4' 5"
Axle spacing rear cluster (tridem)	6' 0"
Axle spacing front to rear (c-c)	30' 0"
Axle weight (tandem steers)	14,814kg
Axle weight (tridem drives)	15,068kg

OPERATOR FEATURES

4-Section hydraulic boom 34' to 110'
Free-swing, continuous rotation
Front bumper stabilizer
Tiltable, enclosed cab
LMI system, rated capacity limiter, and function cutouts

PERFORMANCE INFO

Slewing speed	1.5-2rpm, adjustable
Fixed jib, length options	32' to 49'
Fixed jib, offset angles	0°, 15° or 30° offset
2-sheave, 4-position boom nose	0°, 15°, 30°
Main boom max. length	142' (119' tip height)
Max tip height with jib	167.1'
Winch type	2-speed hydraulic
Line length	400'
Line type	5/8" rotation resistant
Line Speed, Maximum	453fpm
Line Pull, winch 1	10,000lbs single part line
Hook block	2-Sheave, 35T (350lbs)
Overhaul ball	7T
Fixed personnel basket	2-person, rotating





**WITHOUT
QUESTION**

IRVING EQUIPMENT LIMITED
1-800-561-CRANE (2726)
WWW.IRVINGEQUIPMENT.COM

CAPACITY/RANGE INFO

MAIN BOOM LIFTING CAPACITIES

LOAD RADIUS (FT)	BOOM LENGTH 34 FT			BOOM LENGTH 50 FT (A)			BOOM LENGTH 65 FT (B)		
	LOADED BOOM ANGLE (DEG)	CODE 1 OVER REAR (LBS)	CODE 3 FULL 360° (LBS)	LOADED BOOM ANGLE (DEG)	CODE 1 OVER REAR (LBS)	CODE 3 FULL 360° (LBS)	LOADED BOOM ANGLE (DEG)	CODE 1 OVER REAR (LBS)	CODE 3 FULL 360° (LBS)
6	71	100000	100000						
8	67.5	88100	88100						
10	63.5	77900	77900	73	51000	51000			
12	60	69900	69900	70.5	51000	51000			
15	53.5	60400	60400	67	51000	51000	73	40000	40000
20	42	46100	46100	60.5	46400	46400	68.5	38810	38810
25	26.5	35800	35670	53.5	36600	36600	63.5	33150	33150
30				45.5	29670	25590	58.5	29000	26150
35				36.5	23130	18980	53	23610	19500
40				25	18360	14680	47	18850	15190
45							40.5	15440	12160
50							32.5	12870	9920
55							22.5	10860	8170
		1150 LBS		780 LBS		600 LBS		STOWED JIB	
		2940 LBS		2650 LBS		2510 LBS		ERECTED JIB (RETRACTED)	
		3320 LBS		2910 LBS		2710 LBS		ERECTED JIB (EXTENDED)	

DEDUCTIONS FOR JIB FROM MAIN BOOM CAPACITIES

LOAD RADIUS (FT)	BOOM LENGTH 80 FT (C)			BOOM LENGTH 95 FT (D)			BOOM LENGTH 110 FT (E)		
	LOADED BOOM ANGLE (DEG)	CODE 1 OVER REAR (LBS)	CODE 3 FULL 360° (LBS)	LOADED BOOM ANGLE (DEG)	CODE 1 OVER REAR (LBS)	CODE 3 FULL 360° (LBS)	LOADED BOOM ANGLE (DEG)	CODE 1 OVER REAR (LBS)	CODE 3 FULL 360° (LBS)
20	73.5	28230	28230						
25	69.5	24350	24350	73.5	20000	20000			
30	65.5	21280	21280	70.5	18680	18680	74	15500	15500
35	61.5	19000	19000	67.5	16580	16580	71.5	14660	14660
40	57.5	16870	15470	64	14820	14820	69	13270	13270
45	53	15120	12440	60.5	13330	12610	66	11960	11960
50	48	13130	10190	57	12050	10360	63	10850	10480
55	43	11140	8460	53	10920	8620	60	9950	8740
60	37	9540	7080	49	9700	7250	56.5	9210	7360
65	30	8220	5950	44.5	8390	6120	53.5	8410	6240
70	21	7110	5010	40	7290	5190	50	7400	5300
75				34.5	6360	4410	46	6470	4520
80				28	5560	3730	42	5670	3850
85				20	4860	3140	37.5	4980	3260
90							33	4380	2750
95							27	3840	2300
100							19	3350	1900
		490 LBS		420 LBS		360 LBS		STOWED JIB	
		2420 LBS		2360 LBS		2320 LBS		ERECTED JIB (RETRACTED)	
		2580 LBS		2500 LBS		2430 LBS		ERECTED JIB (EXTENDED)	

DEDUCTIONS FOR JIB FROM MAIN BOOM CAPACITIES

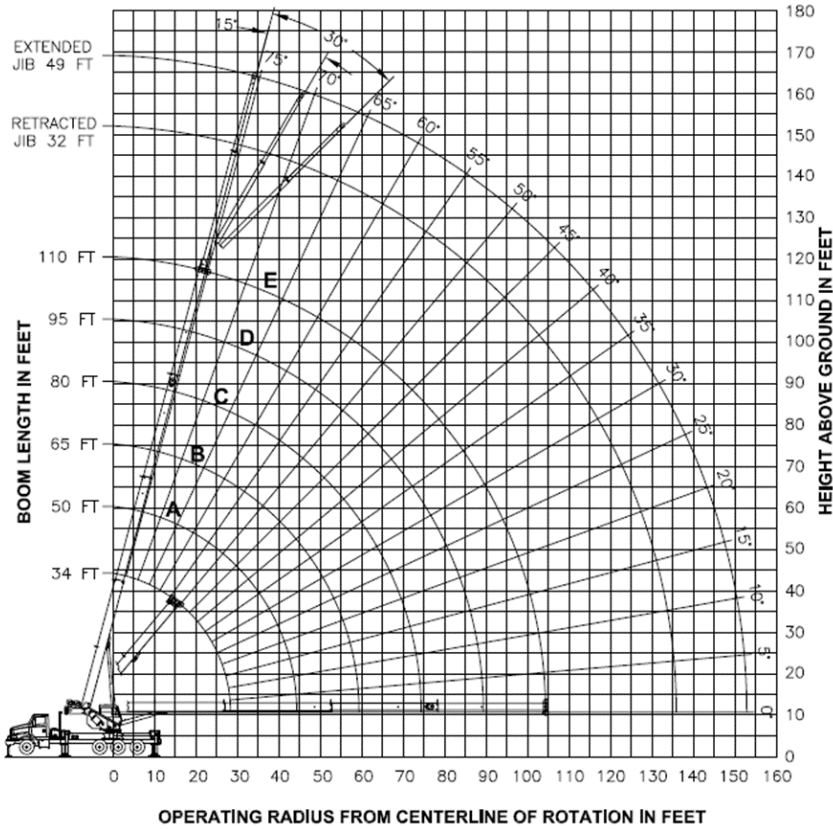


WITHOUT QUESTION

IRVING EQUIPMENT LIMITED
 1-800-561-CRANE (2726)
WWW.IRVINGEQUIPMENT.COM

INFO

- RANGE DIAGRAM -



49 FT EXTENDED JIB LIFTING CAPACITIES

LOAD RADIUS (FT)	0° OFFSET			15° OFFSET			30° OFFSET		
	LOADED BOOM ANGLE (DEG)	OVER REAR (LBS)	FULL 360° (LBS)	LOADED BOOM ANGLE (DEG)	OVER REAR (LBS)	FULL 360° (LBS)	LOADED BOOM ANGLE (DEG)	OVER REAR (LBS)	FULL 360° (LBS)
45	75	5400	5400						
50	73.5	5400	5400						
55	71.5	5400	5400	75	4700	4700			
60	69.5	5400	5400	73.5	4480	4480			
65	68	5230	5230	71.5	4280	4280	75	3520	3520
70	66	4930	4930	69.5	4100	4100	73.5	3410	3410
75	64	4660	4660	67.5	3940	3940	71	3310	3310
80	62	4410	4410	65.5	3790	3790	69	3210	3210
85	60	4170	3810	63.5	3650	3650	67	3130	3130
90	57.5	3950	3290	61.5	3520	3520	64.5	3050	3050
95	55.5	3750	2820	59	3400	3250	62	2980	2980
100	53	3560	2420	57	3290	2800	59.5	2910	2910
105	50.5	3380	2050	54.5	3190	2400	57	2860	2860
110	48	3010	1720	52	3050	2030	54.5	2810	2280
115	45.5	2660	1420	49	2920	1700	51.5	2760	1920
120	42.5	2330	1150	46	2780	1400	48.5	2730	1580
125	39.5	2040	910	43	2660	1130	45	2400	1280
130	36	1770		39.5	1960	870	41	2070	990
135	32	1520		35.5	1680		36.5	1760	
140	28	1290		31	1410		31	1460	
145	22.5	1070		25	1160				
150	15	870		15.5	910				

32 FT RETRACTED JIB LIFTING CAPACITIES

LOAD RADIUS (FT)	0° OFFSET			15° OFFSET			30° OFFSET		
	LOADED BOOM ANGLE (DEG)	OVER REAR (LBS)	FULL 360° (LBS)	LOADED BOOM ANGLE (DEG)	OVER REAR (LBS)	FULL 360° (LBS)	LOADED BOOM ANGLE (DEG)	OVER REAR (LBS)	FULL 360° (LBS)
40	74.5	7300	7300						
45	72.5	7300	7300						
50	70.5	7300	7300	73.5	6500	6500			
55	68.5	6980	6980	71.5	6500	6500	74	5800	5800
60	66.5	6600	6600	69.5	6120	6120	72	5750	5750
65	64	6230	6230	67	5780	5780	69.5	5450	5450
70	62	5870	5280	65	5450	5450	67.5	5160	5160
75	59.5	5530	4480	62.5	5160	4890	64.5	4900	4900
80	57	5110	3800	60	4880	4170	62	4670	4470
85	54.5	4690	3200	57.5	4630	3530	59.5	4450	3800
90	52	4280	2690	54.5	4400	2980	56.5	4250	3210
95	49	3740	2230	51.5	4000	2500	53.5	4070	2700
100	46	3260	1830	48.5	3490	2060	50.5	3660	2230
105	43	2830	1470	45.5	3030	1670	47	3170	1810
110	39.5	2440	1140	42	2620	1320	43.5	2730	1440
115	35.5	2090	850	38	2240	1000	39	2330	1090
120	31.5	1770		34	1890		34.5	1950	760
125	26.5	1480		29	1570		29	1600	
130	20.5	1210		22	1270		20	1250	
135	10	950							

ALLOWABLE LINE PULL

1 PART LINE	2 PART LINE	3 PART LINE	4 PART LINE	5 PART LINE	6 PART LINE	7 PART LINE	8 PART LINE	9 PART LINE	10 PART LINE
10000 LBS	20000 LBS	30000 LBS	40000 LBS	50000 LBS	60000 LBS	70000 LBS	80000 LBS	90000 LBS	100000 LBS

WARNING

ANTI-TWO-BLOCK SYSTEM MUST BE IN GOOD OPERATING CONDITION BEFORE OPERATING CRANE.

REFER TO THE OWNER'S MANUAL.

KEEP AT LEAST 3 WRAPS OF LOAD LINE ON THE DRUM AT ALL TIMES.

5/8" XLT4 LOW-TORQUE (3.5:1 SF) - 35000 LBS MIN BREAKING STRENGTH

- ✓ FULL-SERVICE PROVIDER FOR CRANE RENTAL, RIGGING, AND LIFT PLANNING.
- ✓ DAILY, WEEKLY, MONTHLY RATES AVAILABLE
- ✓ DRY-LEASE AND LONG-TERM RENTALS
- ✓ OUR PURPOSE IS TO LEAVE 'NO ROOM FOR DOUBT'!