



NATIONAL NBT45 – (45T)



EQUIPMENT SPECIFICATIONS



WWW.IRVINGEQUIPMENT.COM



WITHOUT QUESTION

IRVING EQUIPMENT LIMITED
 1-800-561-CRANE (2726)
WWW.IRVINGEQUIPMENT.COM

INFO

IDENTIFICATION

Asset Number	TU753
Crane Make	National
Crane Model	NBT45 – 142
Type	45T Long-Reach
Serial Number	300323

DIMENSIONS

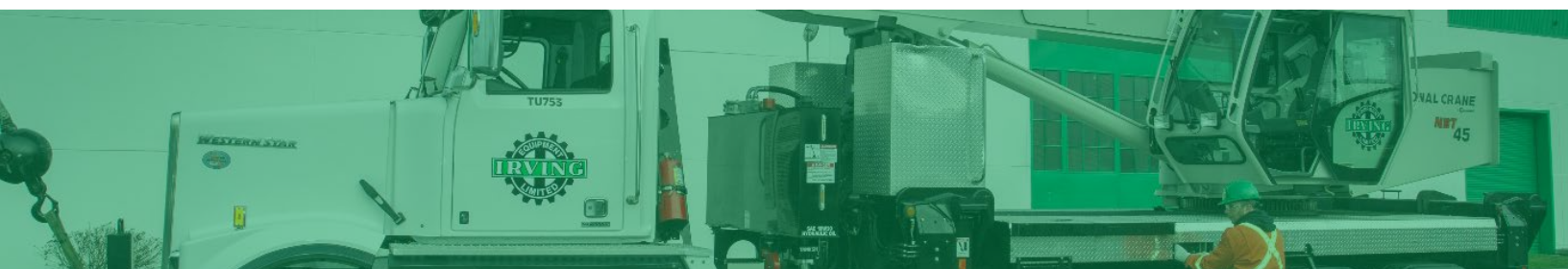
Overall length of carrier, bumper to bumper	473"
Overall length, head sheave to rear bumper	492"
Overall width of carrier	94.5"
Transportation height	156.8"
Fullspan outriggers c-c	295.4"
Midspan outriggers c-c	210.3"
Retracted outriggers c-c	78.6"
Tailswing	103.25"
Center Rot. to front bumper distance	377.5"
Axle spacing front cluster (tandem steer)	60"
Axle spacing rear, pusher axle lifted (tandem)	54"
Axle spacing. Pusher axle down (tridem)	54" - 54"
Axle weight (tandem steers, pusher axle down)	12,580kg (27,734lb)
Axle weight (drives, pusher axle down)	20,370kg (44,908lb)

OPERATOR FEATURES

203' Max tip height w/142' main boom + 55' jib extension
 Longest main boom in its class, means less time installing jibs
 Ground level & in-cab outrigger controls enhance setup time
 Overload protection and Work Area Definition System (WADS)
 1,200lb capacity personnel basket w/tie-off loops

EQUIPMENT INFO

Boom	5-Section w/quick reeve tip
Fixed jib, length options	31' & 55'
Fixed jib, offset angles	0° offset
2-sheave, 4-position boom nose	0°, 15°, 30°
Main boom max. length	142' (145' tip height)
Max tip height with jib	203'
Winch type	2-speed hydraulic
Winch Low/High, max speed	205'/min or 410'/min (max.)
Line type	5/8" rotation resistant 11,280lbs single part line
Line Pull	Grooved w/rotation indicator
Drum	
Hook block	1-Sheave 20T (329lb) Johnson, 7T swiveling (172lb)
Overhaul ball	
Fixed personnel basket	2-person, rotating

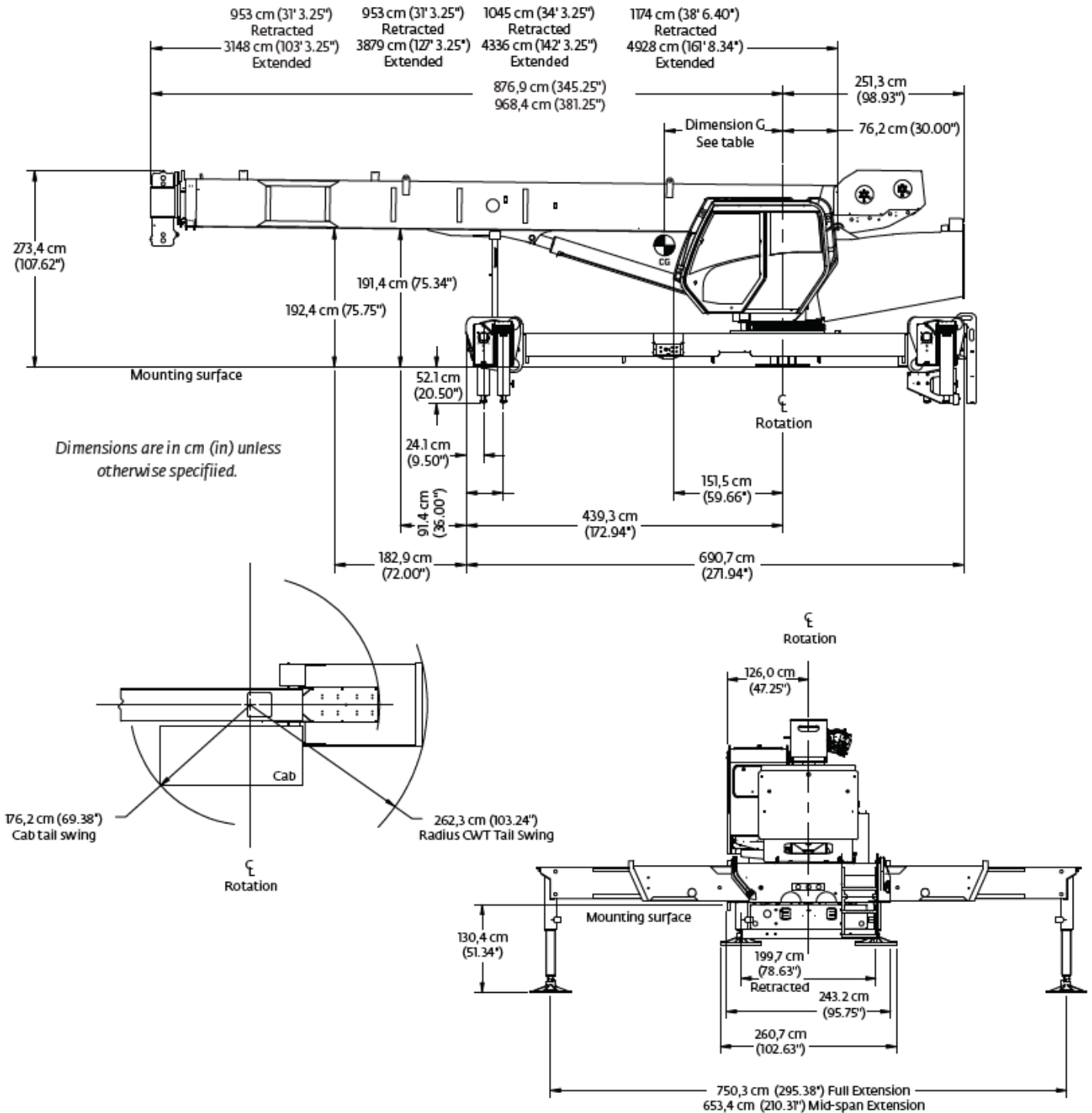




**WITHOUT
QUESTION**

IRVING EQUIPMENT LIMITED
 1-800-561-CRANE (2726)
WWW.IRVINGEQUIPMENT.COM

DIMENSIONS

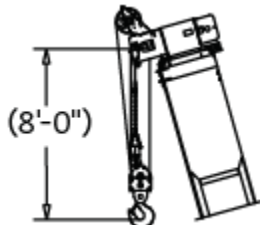
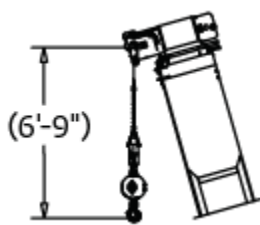
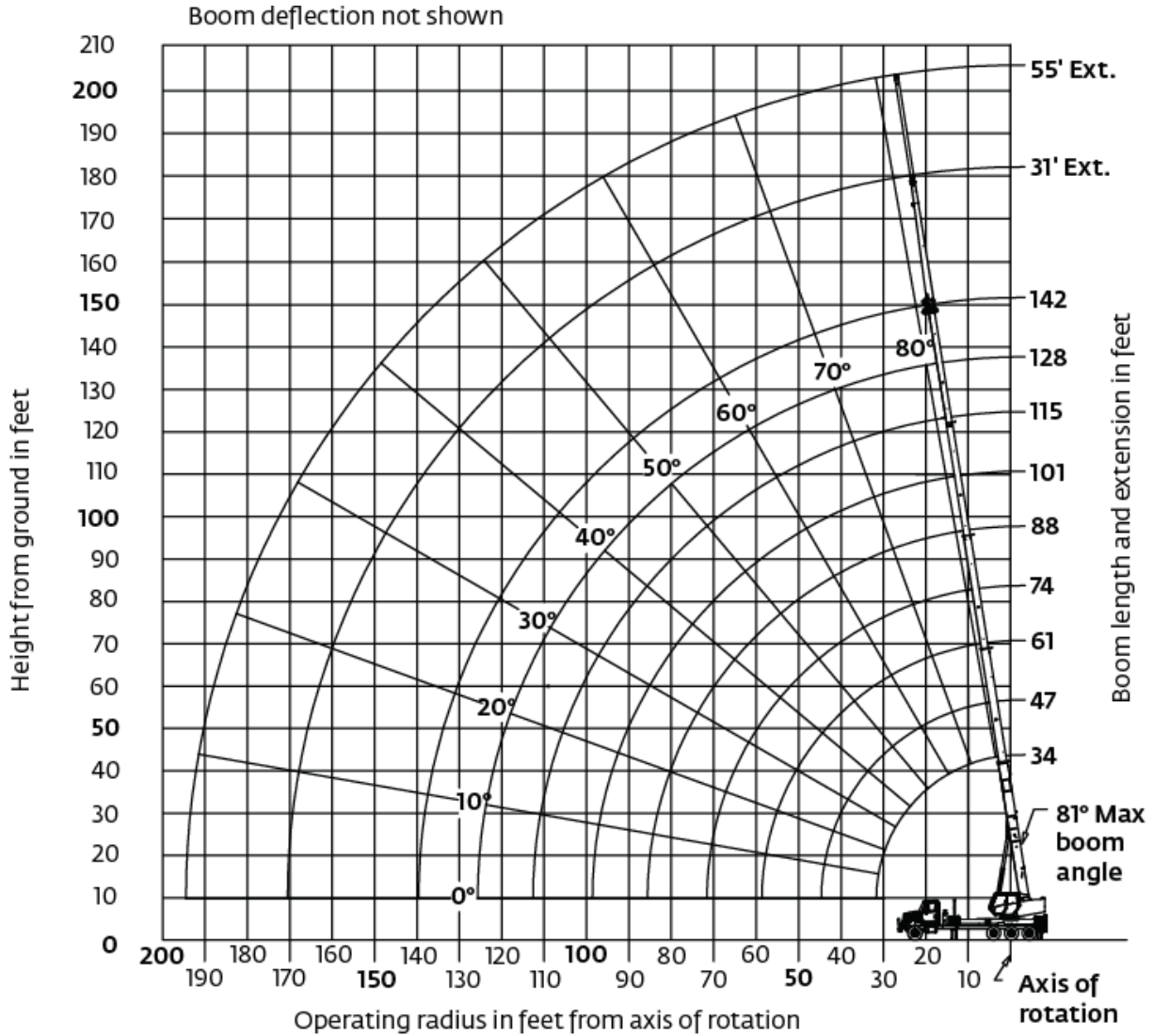




WITHOUT QUESTION

IRVING EQUIPMENT LIMITED
1-800-561-CRANE (2726)
WWW.IRVINGEQUIPMENT.COM

WORKING RANGE – 142' Main boom + 31'-55' fixed extension



Dimensions are for largest furnished hookblock and headache ball with anti-two block activated.



WITHOUT QUESTION

IRVING EQUIPMENT LIMITED
 1-800-561-CRANE (2726)
WWW.IRVINGEQUIPMENT.COM

LIFTING CAPACITIES – Main boom, jib stowed

Radius in feet	#01								
	Main boom length in feet								
	34	47-A	61-B	74-C	88-D	101-E	115-F	128-G	142
7	90,000 (74.9)								
8	79,600 (73.1)								
10	68,200 (69.4)	40,000 (75.6)							
12	57,100 (65.7)	40,000 (73.1)	40,000 (77.4)						
15	44,750 (59.7)	40,000 (69.2)	39,500 (74.5)	35,200 (77.7)					
20	32,100 (48.9)	32,700 (62.3)	33,100 (69.5)	31,500 (73.7)	23,050 (76.7)	17,400 (78.8)			
25	24,300 (35.6)	24,950 (55)	25,300 (64.3)	25,550 (69.6)	20,700 (73.4)	15,750 (76)	13,000 (78.3)		
30	18,950 (13.5)	19,700 (46.9)	20,100 (58.8)	20,300 (65.2)	18,750 (70)	14,300 (73.1)	12,150 (75.8)	10,050 (78)	8000 (79.5)
35		15,900 (37.5)	16,300 (52.9)	16,500 (60.7)	16,700 (66.4)	13,200 (70.1)	11,150 (73.5)	9550 (75.8)	7600 (77.7)
40		13,000 (25.2)	13,400 (46.6)	13,650 (56.1)	13,850 (62.7)	12,200 (67.1)	10,400 (71)	9050 (73.7)	7450 (75.9)
45			11,200 (40.2)	11,400 (51.1)	11,550 (58.8)	11,100 (64.2)	9750 (68.4)	8550 (71.4)	7200 (74)
50			9400 (31.9)	9650 (46.2)	9800 (55.1)	10,000 (60.9)	9100 (65.7)	8050 (69.1)	6800 (72)
55			7750 (20.7)	8000 (40.4)	8200 (50.9)	8350 (57.5)	8500 (62.9)	7600 (66.7)	6550 (70)
60				6700 (33.7)	6900 (46.4)	7000 (53.8)	7150 (59.9)	7150 (64.3)	6200 (67.9)
65				5600 (25.4)	5800 (41.5)	5900 (50)	6050 (56.7)	6200 (61.6)	5600 (65.6)
70				4650 (12.7)	4850 (36)	5000 (46)	5100 (53.5)	5250 (58.8)	5350 (63.4)
75					4100 (29.7)	4200 (41.7)	4300 (50.1)	4450 (55.9)	4550 (60.9)
80					3400 (21.7)	3500 (37)	3650 (46.5)	3750 (52.9)	3850 (58.3)
85					2750 (7.2)	2950 (31.6)	3050 (42.8)	3100 (49.8)	3200 (55.6)
90						2400 (25.3)	2500 (38.7)	2600 (46.5)	2650 (52.9)
95						1950 (16.6)	2050 (34.1)	2100 (43.1)	2200 (50)
100							1600 (29)	1700 (39.4)	1750 (47)
105							1250 (22.7)	1300 (35.4)	1400 (43.9)
110							900 (13.8)	950 (30.9)	1050 (40.6)
Minimum boom angle (°) for indicated length (no load)							0	25.6	36.9
Maximum boom length (ft) at 0° boom angle (no load)							115		

NOTE: Loads displayed in pounds. () Boom angles are in degrees.
 #LMI operating code. Refer to LMI manual for operating instructions.

- ✓ FULL-SERVICE PROVIDER FOR CRANE RENTAL, RIGGING, AND LIFT PLANNING.
- ✓ DAILY, WEEKLY, MONTHLY RATES AVAILABLE
- ✓ DRY-LEASE AND LONG-TERM RENTALS