



# GROVE GMK5225 - (225T)



## EQUIPMENT SPECIFICATIONS



**WITHOUT  
QUESTION**

[WWW.IRVINGEQUIPMENT.COM](http://WWW.IRVINGEQUIPMENT.COM)



# WITHOUT QUESTION

**IRVING EQUIPMENT LIMITED**  
 1-800-561-CRANE (2726)  
[WWW.IRVINGEQUIPMENT.COM](http://WWW.IRVINGEQUIPMENT.COM)

## INFO

### IDENTIFICATION

Asset Number	CR307
Crane Make	Grove
Crane Model	GMK5225
Type	225T All-Terrain
Serial Number	51704010

### DIMENSIONS

Overall length of carrier	45.7'
Overall width of carrier	9.8'
Transportation height	13.1'
Fullspan outriggers c-c	26.6'
75% outriggers c-c	22.4'
50% outriggers c-c	18.4'
25% outrigger c-c	14.4'
Outriggers, front to rear spacing	28.1'
Center of rotation to back bumper	14.5'
Center of rotation to front bumper	31.2'
Weight, w/jib, aux. winch, 3-axle dolly	146,206lb
Axle Spacing (Front- 2 <sup>nd</sup> , 2-3, 3-4, 4-rear)	10.2', 5.4', 8', 5.4'
Dolly	3 Axle

### FEATURES

- 331' Maximum Tip Height
- 5-Position outriggers for on-site flexibility
- Hydraulic luffing jib
- Integrated 11.8' heavy-duty jib
- All-wheel steer and MEGATRACK suspension

### EQUIPMENT INFO

Full counterweight	114,600lb
Fixed jib, length options	36.1', 59.1', 85.3', 111.6'
Fixed jib, offset angles	Luffing 0°-40°
Luffing jib	Live, hydraulic
Main boom max. length	210' (220' tip height)
Maximum tip height w/jib	331'
Slewing speed	1.3 rpm
Travel Speed	85km/h
Boom Elevation	-1.5° – 83°
Hook blocks	Ball, 1,3, and 5 sheave
Line Pull, max. single line	20,907lbs
Max line speed (either winch)	410'/min
Gradeability	45%
Hoist rope	951'L x 22mm dia.

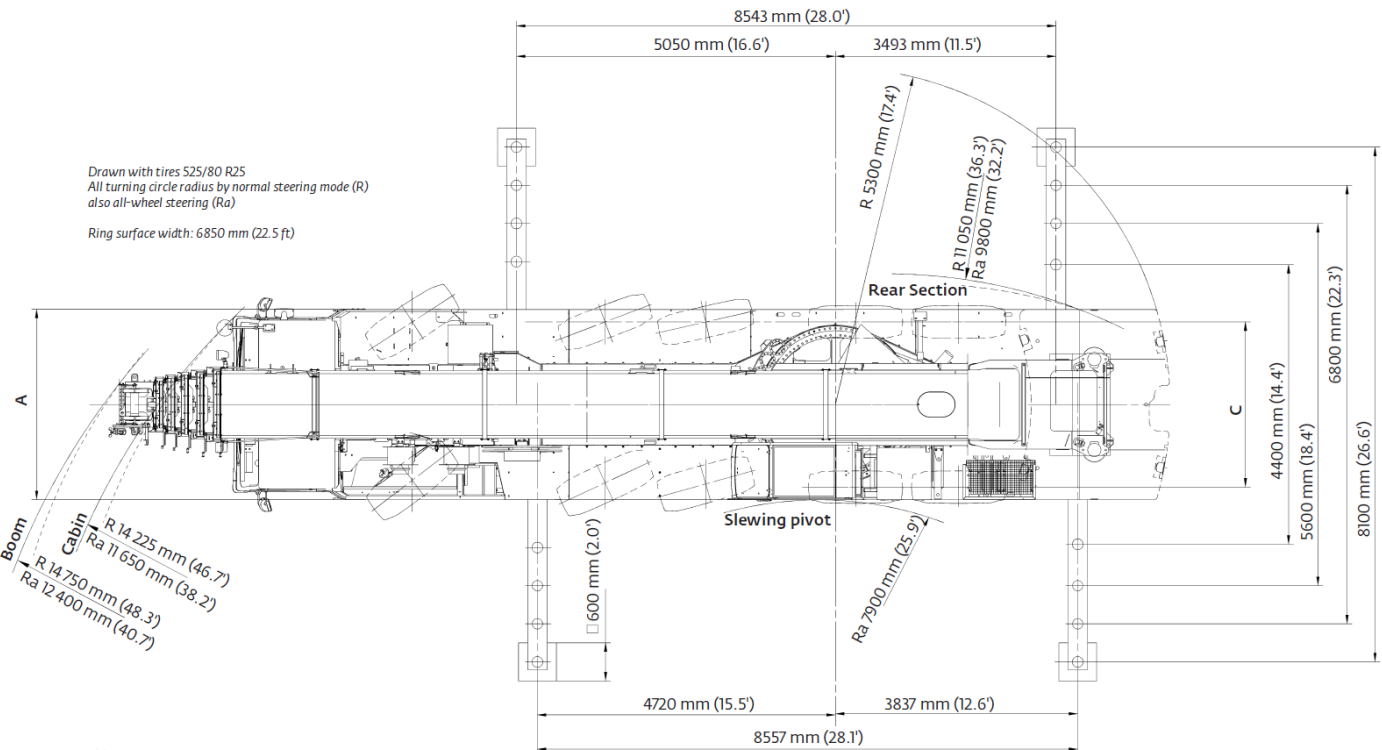
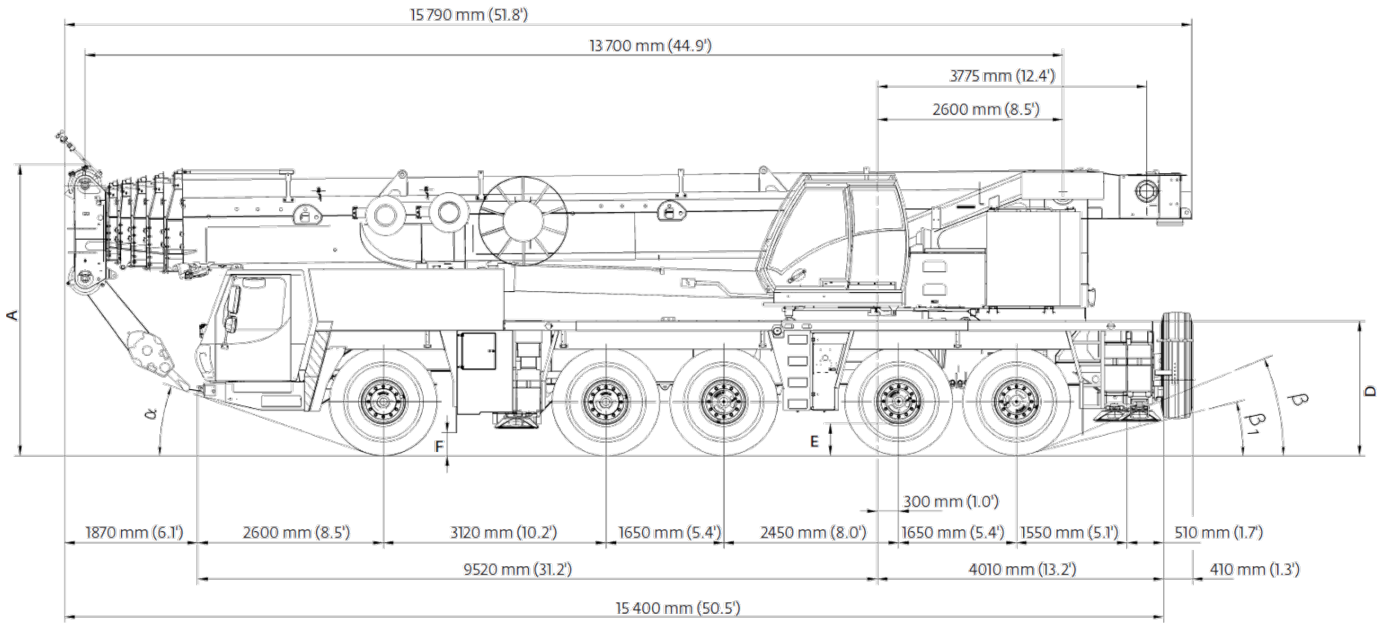




**WITHOUT  
QUESTION**

**IRVING EQUIPMENT LIMITED**  
 1-800-561-CRANE (2726)  
**WWW.IRVINGEQUIPMENT.COM**

**KEY DIMENSIONS**

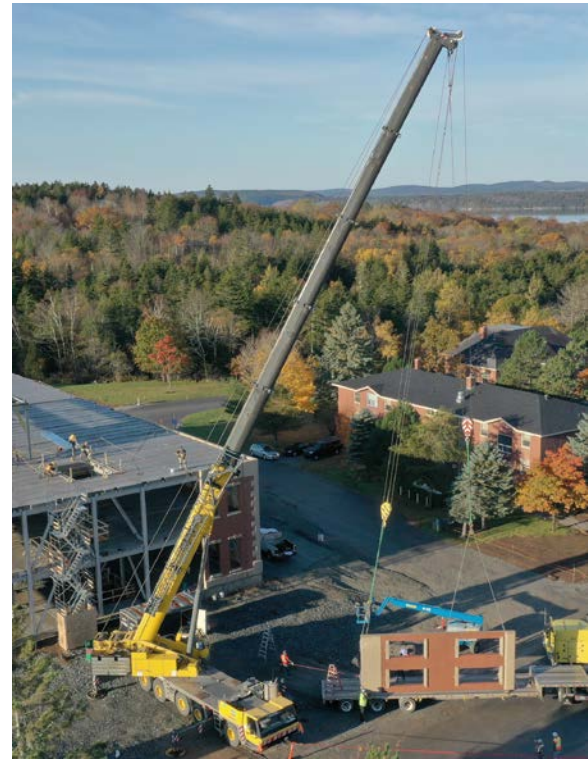
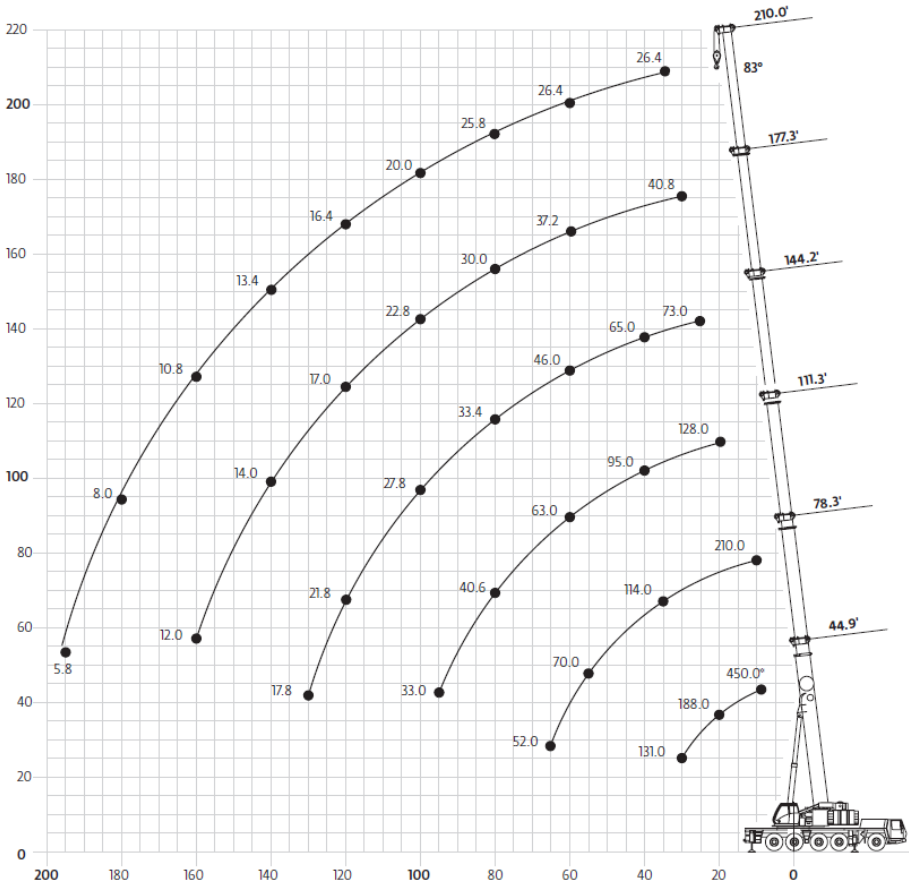




# WITHOUT QUESTION

**IRVING EQUIPMENT LIMITED**  
 1-800-561-CRANE (2726)  
**WWW.IRVINGEQUIPMENT.COM**

## KEY DIMENSIONS



## Load charts Main boom



13.7 m - 64 m (44.9 ft - 210 ft)    
 52 000 kg (114,600 lb)    
 28.1 ft x 26.6 ft spread (100%)    
 360°

Pounds x 1000

Feet	44.9	61.7	78.3	94.8	111.3	127.5	144.2	160.8	177.3	193.8	210.0
8.0	450.0*										
9.0	310.0										
10.0	286.0	236.0	210.0	172.0							
15.0	234.0	217.0	189.0	169.0	128.0						
20.0	192.0	188.0	171.0	153.0	128.0	97.0	73.0				
25.0	161.0	159.0	153.0	142.0	126.0	97.0	73.0	55.0			
30.0	131.0	138.0	132.0	131.0	115.0	93.0	73.0	55.0	40.8	32.2	
35.0		120.0	116.0	115.0	105.0	87.0	71.0	54.0	40.8	32.2	26.4
40.0		104.0	103.0	102.0	95.0	80.0	65.0	53.0	40.8	32.2	26.4
45.0			88.0	91.0	92.0	88.0	75.0	59.0	40.8	32.2	26.4
50.0				83.0	81.0	80.0	70.0	54.0	48.0	40.2	32.2
55.0				73.0	71.0	71.0	66.0	50.0	45.0	39.0	32.2
60.0				63.0	62.0	63.0	61.0	46.0	42.0	37.2	32.2
65.0				55.0	55.0	56.0	57.0	41.6	39.4	35.4	31.2
70.0				51.0	51.0	50.0	52.0	38.8	36.8	33.8	30.0
75.0				47.0	45.0	47.0	36.0	34.2	32.0	28.8	26.4
80.0					40.6	42.6	33.4	32.0	30.0	27.6	25.8
85.0					38.4	38.6	31.6	29.8	28.0	26.6	24.4
90.0						35.0	30.2	28.0	26.2	25.2	23.0
95.0							31.8	29.0	26.2	24.6	23.8
100.0								29.2	27.8	24.6	22.0
105.0								26.6	26.6	23.2	20.4
110.0									25.6	21.4	19.2
115.0										19.8	18.2
120.0											17.6
125.0											
130.0											
135.0											
140.0											
145.0											
150.0											
155.0											
160.0											
165.0											
170.0											
175.0											
180.0											
185.0											
190.0											
195.0											

\* Over the rear with special equipment

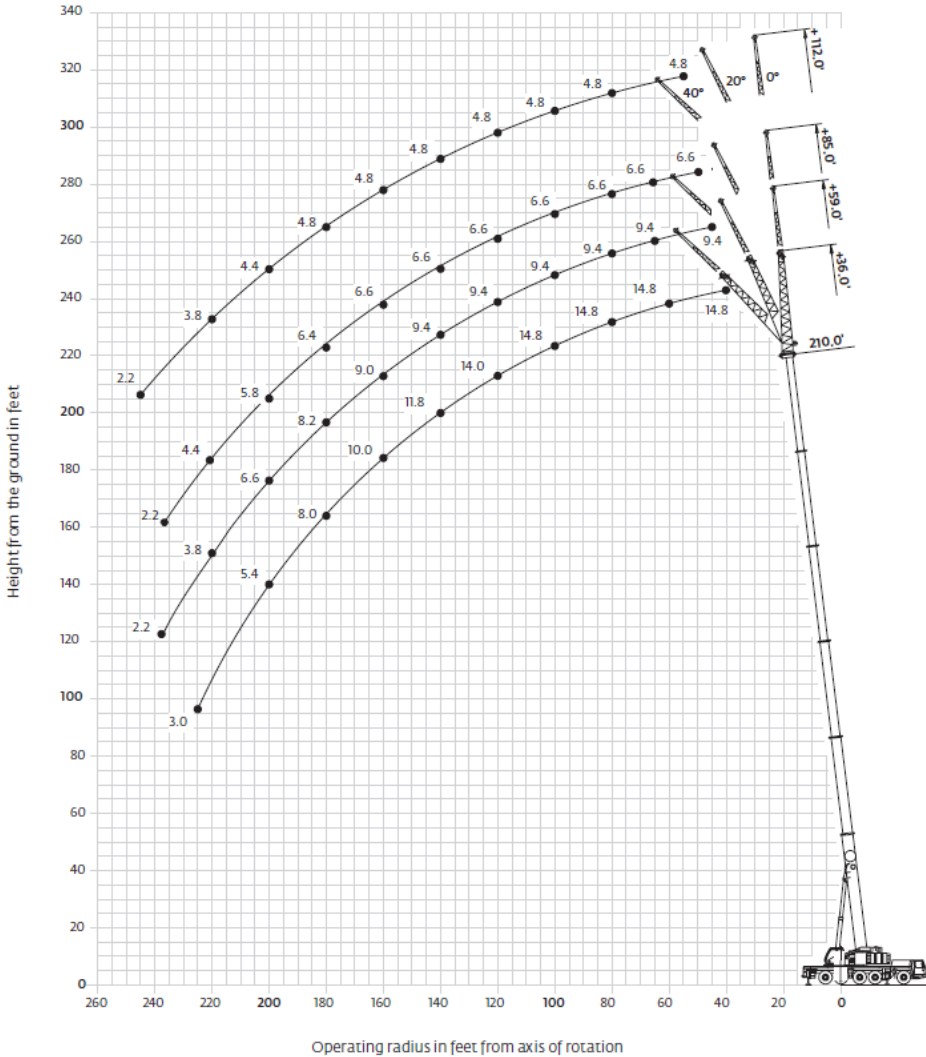


**WITHOUT  
QUESTION**

**IRVING EQUIPMENT LIMITED**  
1-800-561-CRANE (2726)  
[WWW.IRVINGEQUIPMENT.COM](http://WWW.IRVINGEQUIPMENT.COM)

**INFO**

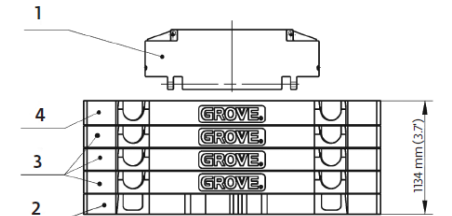
64 m (210 ft) main boom, 11 m - 18 m (36 ft - 59 ft) swingaway and 2 X 8 m (26 ft) inserts



**\*Optional hook blocks**

Lifting capacity	Sheaves	Weight	Parts of line	Possible load with the crane
200 t (220 USt)	9	2400 kg (5291 lb)	2-16	140 t* (154 USt*)
160 t (176 USt)	7	1750 kg (3858 lb)	2-15	135 t (182 USt)
125 t (138 USt)	5	1650 kg (3638 lb)	2-11	100 t (110 USt)
80 t (88 USt)	3	950 kg (2094 lb)	1-7	65 t (72 USt)
32 t** (35 USt)	1	600 kg (1323 lb)	1-3	28 t (31 USt)
12 t*** (13.2 USt)	H/B	300 kg (661 lb)	1	9.5 t (10.5 USt)

\* Requires additional boom nose sheave  
 \*\* Required for overhaul of single part line with boom/jib lengths in excess of 64 m (210 ft)  
 \*\*\* Overhaul weight designed for a maximum of 64 m (210 ft) boom/jib lengths



- 1000 kg (2200 lb) Bolted (Auxiliary Hoist or IPO)
- 11 000 kg (24,251 lb) Baseplate
- 10 000 kg (22,046 lb) Stacking
- 10 000 kg (22,046 lb) Stacking

	1	2	3	4
Counterweight Configuration kg (lb)				
1000 (2200)	●			
12 000 (26,450)	●	●		
22 000 (48,500)	●	●	●	
32 000 (70,500)	●	●	●	●
42 000 (92,500)	●	●	●	●
52 000 (114,600)	●	●	●	●

- ✓ FULL-SERVICE PROVIDER FOR CRANE RENTAL, RIGGING, AND LIFT PLANNING.
- ✓ DAILY, WEEKLY, MONTHLY RATES AVAILABLE
- ✓ DRY-LEASE AND LONG-TERM RENTALS
- ✓ OUR PURPOSE IS TO LEAVE 'NO ROOM FOR DOUBT'!