

# Liebherr LTM1400-7.1 (500T)



## EQUIPMENT SPECIFICATIONS



**WITHOUT  
QUESTION**

[WWW.IRVINGEQUIPMENT.COM](http://WWW.IRVINGEQUIPMENT.COM)



# WITHOUT QUESTION

**IRVING EQUIPMENT LIMITED**  
 1-800-561-CRANE (2726)  
[WWW.IRVINGEQUIPMENT.COM](http://WWW.IRVINGEQUIPMENT.COM)

## INFO

### IDENTIFICATION

Asset Number	CR267
Crane Make	Liebherr
Crane Model	LTM1400 – 7.1
Type	500T All-Terrain
Serial Number	072067

### DIMENSIONS

Overall length of carrier	54'10"
Overall width of carrier	10'2"
Transportation height	13'1"
Fullspan outriggers c-c	31'2
Midspan outriggers c-c	20'2"
Outriggers, front to rear length	32'9"
Tailswing radius	18'4" – 21'8"
Overall length, boom in rest.	60'10"
Center of rotation to back bumper	15'3"
Center of rotation to front bumper	39'1
Counterweight removed	89,839lbs
Counterweight & jib removed	87,194lb
Dolly	(Boom launch)

### OPERATOR FEATURES

Highly versatile for heavy lift & long reach projects	5-Section, telescopic boom w/Telematik
Boom guying system	Self-assemble Y-frames
Variable, active rear steering	Work area definition
20-degree tiltable cab	Modern cab
LICCON Monitor display	

### HOISTING INFO

Full counterweight	308,600lb
Fixed jib, length options	23' – 184'
Fixed jib, offset angles	0°, 20°, 40°
Luffing jib	46'-276'
Main boom max. length	197'
Slewing speed	1.5rpm
Boom up time to 0-82°	70 seconds
Travel Speed	50 mph
Boom scoping time 51'-197'	360 seconds
No. Winches	3
Line Pull, max. single line	28,415lbs
Max line speed	426'/minute
Gradeability	39.7%
Hoist Rope	.98"



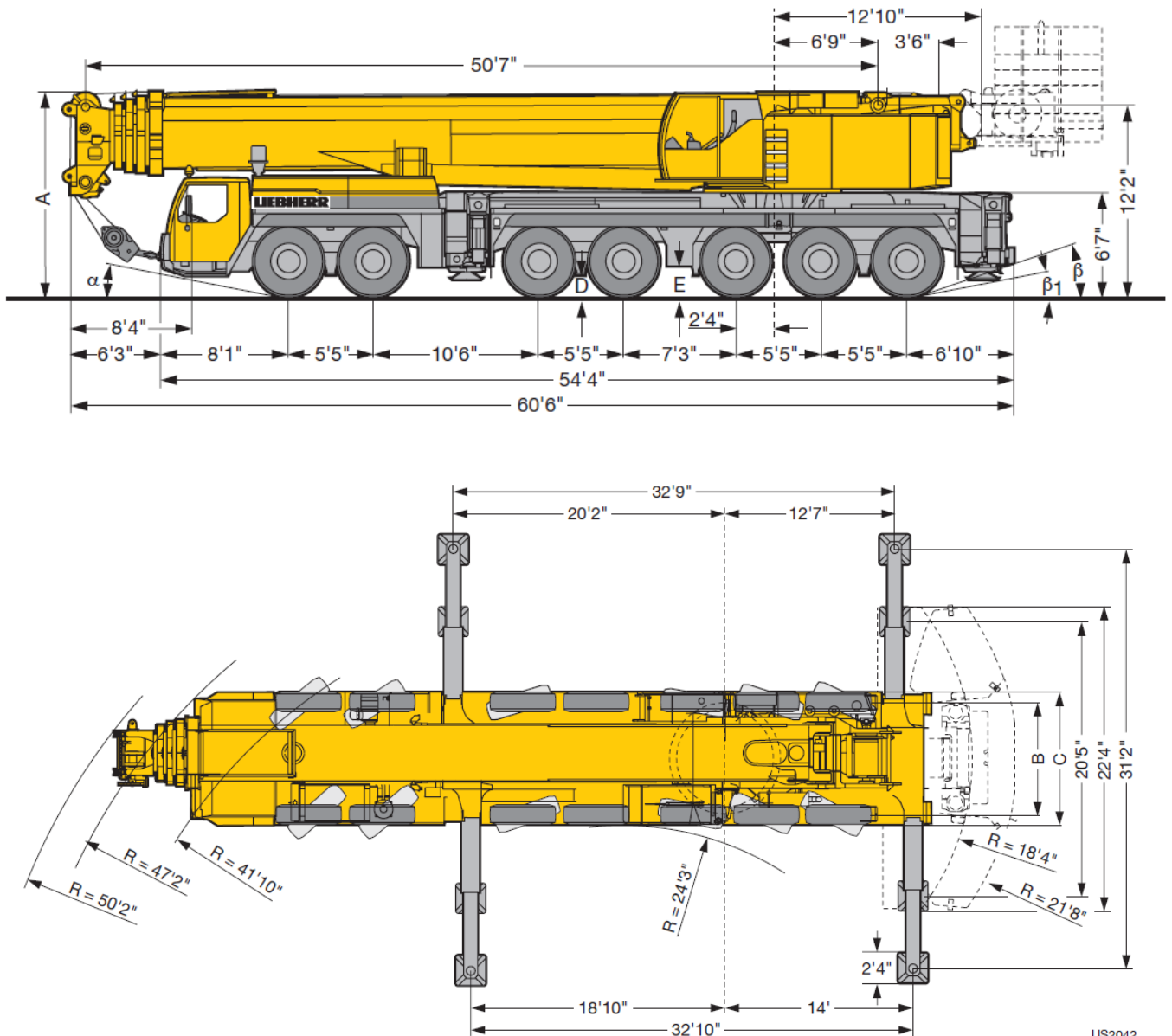




**WITHOUT  
QUESTION**

**IRVING EQUIPMENT LIMITED**  
1-800-561-CRANE (2726)  
[WWW.IRVINGEQUIPMENT.COM](http://WWW.IRVINGEQUIPMENT.COM)

## DIMENSIONS



US2042

- ✓ FULL-SERVICE PROVIDER FOR CRANE RENTAL, RIGGING, AND LIFT PLANNING.
- ✓ DAILY, WEEKLY, MONTHLY RATES AVAILABLE
- ✓ DRY-LEASE AND LONG-TERM RENTALS
- ✓ OUR PURPOSE IS TO LEAVE 'NO ROOM FOR DOUBT'!